

# 2019 ANNUAL REPORT



COMMUNITY  
FOUNDATIONS  
OF THE HUDSON VALLEY

**Community Foundations  
of the Hudson Valley  
Board of Trustees**

**JEFFREY D. WOOD, CHAIR**

Aziz Ahsan, Esq.  
Ellen L. Baker, Esq.  
William A. Brenner, CPA  
Peter J. Brent, CFP  
Eleanor Charwat  
Yu-Shin Chen  
Linda B. Clarke  
Charles A. Freni Jr.  
Kevin Hamilton  
Peter Krulewitch  
Wesley J. Lee  
Cora M. Mallory-Davis  
Thomas J. Murphy  
Darlene L. Pfeiffer  
Nathaniel S. Prentice  
Myrna Sameth  
Brenda K. Santoro, CPA  
Chip Simon, CFP  
Steven R. Tinkelman, AIA  
Arthur R. Upright

**Dutchess County  
Board of Advisors**

**CHARLES A. FRENI JR., CHAIR**

Sandy Arteaga  
Christopher M. Capone  
Eleanor Charwat  
Ann Gifford, Esq.  
Kevin Hamilton  
Anita Jones  
Cora M. Mallory-Davis  
Edward McCormick  
Gabriela Owen  
Sheila E. Scott, CPA  
Paul Stoddard  
Lisa Wilson

**Putnam County  
Board of Advisors**

**NATHANIEL S. PRENTICE, CHAIR**

Robert J. Cotter  
T. Jefferson Cunningham III  
Peter Hofmann, MD  
Kenneth Kearney  
Frank E. Lucente, MD  
Frederick Osborn III

**Ulster County  
Board of Advisors**

**DARLENE L. PFEIFFER, CHAIR**

Rev. Modele Clark  
John Finch  
Jane Garrity  
Pascal Guirma  
Linda Hopfenspirger  
Johann Huleatt  
Joan Lonergan  
Thomas J. Murphy  
Marianne Murray  
Arthur R. Upright  
John J. Wadlin, Esq.

**Of Counsel**

John K. Gifford, Esq.

**Leadership**



**Back row (L to R):** Charles A. Freni Jr.; Nathaniel S. Prentice; Peter J. Brent, CFP; Arthur R. Upright; Nevill Smythe; Jeffrey D. Wood, Chair; Peter Krulewitch; Thomas J. Murphy; Steven R. Tinkelman, AIA.

**Front row (L to R):** Myrna Sameth; Brenda K. Santoro, CPA; Ellen L. Baker, Esq.; Eleanor Charwat; Cora M. Mallory-Davis; Yu-Shin Chen; Aziz Ahsan, Esq.

**Not pictured above:**



Chip Simon, CFP



Linda B. Clarke



Wesley J. Lee

**Not pictured:** William A. Brenner, CPA; Kevin Hamilton; Darlene L. Pfeiffer.



**On the cover:**

A few of the faces and places that have shaped our story.  
Thank you for 50 years of working together!

**From the Chair & President**

*Dear Friends,*

Thank you for helping to celebrate and commemorate our 50th anniversary year! Your generous contributions and support have sustained our efforts for half a century, and we are grateful.

More than simply sustaining, our partnership has made this year truly exciting. Together more than 400 of you helped to mark our path From Founders to the Future at the 2019 Garden Party, we awarded **more than \$300,000 in scholarships to local students** to pursue their educational dreams, we **invested \$50,000 in classrooms and curricula of local teachers**, we **empowered volunteers to move more than 150,000 pounds of food** through the FeedHV app, and more.

With the guidance of our 50th Anniversary Honorary Committee, we focused on growing our capacity to respond to the needs of our community. Throughout the year, our 50th Anniversary Campaign **raised nearly \$500,000 to help endow the Community Grants program**, ensuring a baseline of support for local non-profits, **grew assets by \$6.8 million of major gifts and increased Legacy Society membership by 50% to continue the work of improving lives**. Thank you!

In addition to the successes of our campaign, we opened 32 new funds to enhance the quality of life in the Hudson Valley. With new activity and the effective oversight of our investment committee, our assets grew to over \$80 million.

**As we look back over our history, we are struck by the enduring care and collaboration that makes our work possible.** From donors with a passion for service to nonprofit partners who work together to create the best outcomes for all, we are proud to partner in these meaningful efforts.

**Beyond numbers reached and goals met, our shared work has made a difference in the community we share.** Those impacts—though less easily quantified—embody the heart of what matters.

In return, we strive to offer care and collaboration to everyone we work with. If we can help you find tax-smart strategies for making a difference, establish a charitable legacy in your family, or strengthen our community in any way – please reach out, we are here to empower your philanthropy. We believe this approach sets us apart and will propel our work into the next 50 years and beyond.

**With appreciation for all the ways you have contributed to our work of Responding Today, Investing in Tomorrow,**

**Jeffrey D. Wood,**  
Chair, Board of Trustees

**Nevill Smythe,**  
Interim President & CEO

**Staff**



**Nevill Smythe**  
Interim President &  
Chief Executive Officer



**Nancy Rossi Brownell**  
Vice President, Putnam



**Sally J. Cross, CFRE**  
Vice President,  
Philanthropy



**Gabriella Fryer**  
Program & Finance  
Associate



**Roksolana  
Geramita, CPA**  
Chief Financial Officer



**Aliza Krevolin, MSW**  
Director of Special  
Projects



**Jacqueline Lieske**  
Communications  
Manager



**Cristin McPeake**  
Vice President,  
Programs



**Kevin J. Quilty**  
Vice President



**Alaina L. Voulgaropoulos**  
Administrative &  
Database Assistant



# Repairing the World Beginning at Home

Guided by a lifelong sense of service and empathy, Joan Sherman has dedicated herself to others in unique and meaningful ways. Compelled by that sensibility, when she sees opportunities to serve – she pursues them.

**“Personally and professionally, I have found the question ‘what can I do to help?’ irresistible,”** said Joan. “Answering that call started here in Poughkeepsie, circled the world with my husband [to countries in Central Europe, Asia and Africa] and brought me back in new and deepened ways since he passed.”

Joan helped establish the Poughkeepsie Head Start program in 1965 with a grant from the Ford Foundation. Four years later, with the program shored up, she returned to school for a Master’s Degree at Sarah Lawrence College to “understand leadership and how it evolves from the personal to the collective, in community.”

After that experience, she returned to Vassar College, her undergraduate alma mater, and worked in roles that required strategy, sensitivity and mediation skills. “My professional life was not about a linear path – rather, a series of fabulously interesting jobs that brought me into connection with people doing their best to improve the world.”

In 1996 Joan and her husband Jonah transitioned their lives to volunteering on international projects. They worked

with several organizations, of which she notes the International Executive Service Corporation was “profoundly life-changing.”

“It was eye-opening to see the state of the world – to see poverty of a different scale, to see families challenged to care for children orphaned by AIDS and more. I still marvel at all we tried to absorb, learn about and understand. We became close to people, and some of those relationships still endure.”

## International experiences, enriched local perspective

After Jonah passed in 2008, Joan decided to refocus at home. She picked back up where she started in 1965, with education and children in the city of Poughkeepsie. The next frontier of her focus became clear while working as a Book Buddy at Clinton Elementary School.

She was partnered with a second-grade student, whose parents were incarcerated. “Working with her, I realized that no matter what we did together, she would be at a disadvantage in life. After inquiring with her teacher, I heard more

Out of the expansive narrative of incarceration, equity and economic justice, Joan decided to focus on targeted, tangible solutions.

stories of extraordinary difficulties faced by students separated from parents and loved ones.”

Guided by the Jewish concept of *tikun olam*, ‘to repair the world,’ Joan was again inspired to answer the irresistible question of her life.

At a conservative estimate, one in four students in Poughkeepsie is living that experience. In addition to the immediate emotional response of students missing their family members, Joan is keen to highlight the secondary challenges of broken trust and confidence along with physical symptoms of stress and trauma.

As a fundholder at Community Foundations, she asked if we were aware of any projects or programs addressing the impacts of incarceration. Together, we engaged in a research and discovery process that brought government agencies, officials and organizations to the table.

Out of the expansive narrative of incarceration, equity and economic justice, Joan decided to focus on targeted, tangible

*Joan Sherman created the Sherman Re-entry Fund at the Foundations.*

solutions. The first was to help create a pathway for re-entry to the community for those who are homeless after incarceration or serve their parole behind bars for lack of housing.

In Poughkeepsie, Community Housing Innovations (CHI) was starting to do that same work in conjunction with the Department of Children and Family Services. CHI had a few gaps to begin providing men with temporary, transitional housing at the end of their sentences – and that is where Joan stepped in.

“Men are sitting in jail unable to leave because they lack housing,” said Stacey Gamberg of CHI’s

re-entry home in Poughkeepsie. “We offer a place for them to pivot their lives. Housing and food is just the beginning of what we do. We connect them to a network of agencies and services to develop self-care, employment and technology skills.”

Since its opening in August 2018, the program has helped dozens of men successfully re-integrate into the community. To them, Joan is “their angel, a source of light, and a person who makes them feel worthy” said Gamberg.

Not content to stop there, Joan continues to explore these challenges from different perspectives. Through the Community Foundations, she has met with public defenders, wardens, social workers and other agencies. “We’ve been on a listening tour,” Joan said, “trying to find what has worked and how to replicate those successes.”

To leverage her learning into outcomes, Joan created the Sherman Re-entry Fund at the Foundations. Through distributions from her retirement account, she is strategically supporting the work that matters – while ensuring her ability to continue repairing the world for years to come. 🌱





# Why We Give

Since 2005, the Community Foundations has allocated unrestricted resources to strengthen the nonprofits of our region. Through the Community Grants program, we have invested more than \$1.3 million to hone our partners' ability to respond to needs – both urgent and emerging.

**A true community endeavor, grants are made possible through generous donations,** proceeds from the annual Garden Party – and the careful review of applications by hundreds of volunteers. In this way, grants are reflective of the community and made to benefit the community.

As a designated and consistent source of support we have awarded funding to feed families, teach children to read, assist cancer patients, provide cultural experiences, create opportunities for veterans, care for the elderly and much more.

In 2011, Community Grants facilitated emergency response grantmaking in the wake of Hurricane Irene. As floodwaters began to recede, funds were deployed

to shore up farms, purchase medical equipment and initiate an emergency disaster 'call down' response system. Through those hardships, grants rebuilt lives and deepened collaborative roots amongst partners on-the-ground.

"As a critical component of our mission to improve lives locally, Community Grants were a top priority for our 50th Anniversary Campaign," said Nevill Smythe, Interim President & CEO of the Community Foundations. "Given the importance and flexibility of these grants, our generous donors have responded with gifts totaling \$500,000 to ensure this work will endure for years to come." 🌱

## A Community Responds

*Rondout Valley Growers Association*

**Hurricane Irene devastated New York in August of 2011.** Damages to infrastructure, homes and crops across the state totaled \$296 million.

The Cornell Cooperative Extension of Ulster County assessed farming losses in the Rondout Valley region at \$2.9 million in revenue and thousands in infrastructure. Some farmers experienced 100% crop destruction – and one farmer reported his fields were submerged under 12 feet of water.

Faced with these impacts in 2011, the Rondout Valley Growers Association (RVGA) led an endeavor to fundraise and support farmers in the community.

"The impact of Hurricane Irene on

Rondout Valley farmers and indeed on so many throughout our region was enormous," said Deborah Meyer DeWan, then Executive Director of RVGA. "The ability to disperse grants to impacted farmers, literally meant the difference of their ability to eat, remain in their homes and begin farming again the next year—rather than going out of business."

With a Community Grant, they were able to leverage funding into a community-wide effort. In a thank you letter from 2012, Deborah said: "it truly does take a community...and with this grant, we were able to help our farmers, who are key in our local history, culture and economy."

RVGA



**"The ability to disperse grants to impacted farmers** literally meant the difference of their ability to eat, remain in their homes and begin farming again the next year – rather than going out of business."

**Deborah Meyer DeWan,** former Executive Director, RVGA

## Small in Size, Global in Impact *Putnam History Museum*

**Community Grants typically range between \$1,000 and \$5,000.** Given those constraints, our community volunteers are careful to review applications for efficiency and impact.

One recent Community Grant helped the Putnam History Museum in Cold Spring catalog and digitize their collection. They utilized a \$2,000 grant to connect local maps, paintings and photographs with the world.

"When I started at the museum, I discovered a veritable treasure trove of resources," said John Duncan, Collections Manager. "In exploring the archives, an almost romantic vision came over me: we could and should be putting these materials into the hands of people who can



*A young woman in the fields. From the collection of the Putnam History Museum.*

benefit from them. Creating access for a broader audience also creates an opportunity to consider which stories haven't been told yet...and that's where I got excited to do this."

Since the archives went live online, John shares that photographs have quickly become the most popular content. He said "they spark conversations, questions and phone calls. People who recently relocated here can see what their home looked like in 1880, and people who have since moved across the globe can reconnect with family histories. One couple from Australia planned a trip to Cold Spring based on an image they found in our archive. That was an incredibly rewarding experience for me as a historian, and for us as an organization." 🌱

# The Roe Effect

**Service was a through line in Leslie (Les) C. Roe's life.** In his youth, he enlisted in the Army during WWII. Later, he was a member of the LaGrange Rotary, Dutchess County Historical Society, the Masons and the Boy Scouts of America. When it came time for him to make plans for his estate, he came to the Community Foundations.

Working with accountant Fred Quenzer, they established a fund to continue Les' community commitment in perpetuity.

"As a former trustee of the Community Foundations, I knew its professionalism and proficiency," said Fred. "Les was interested in supporting youth programs that create access and opportunity. Through the Foundations, he had the advantages of oversight and investment manage-



*Veteran and committed community member Les Roe.*

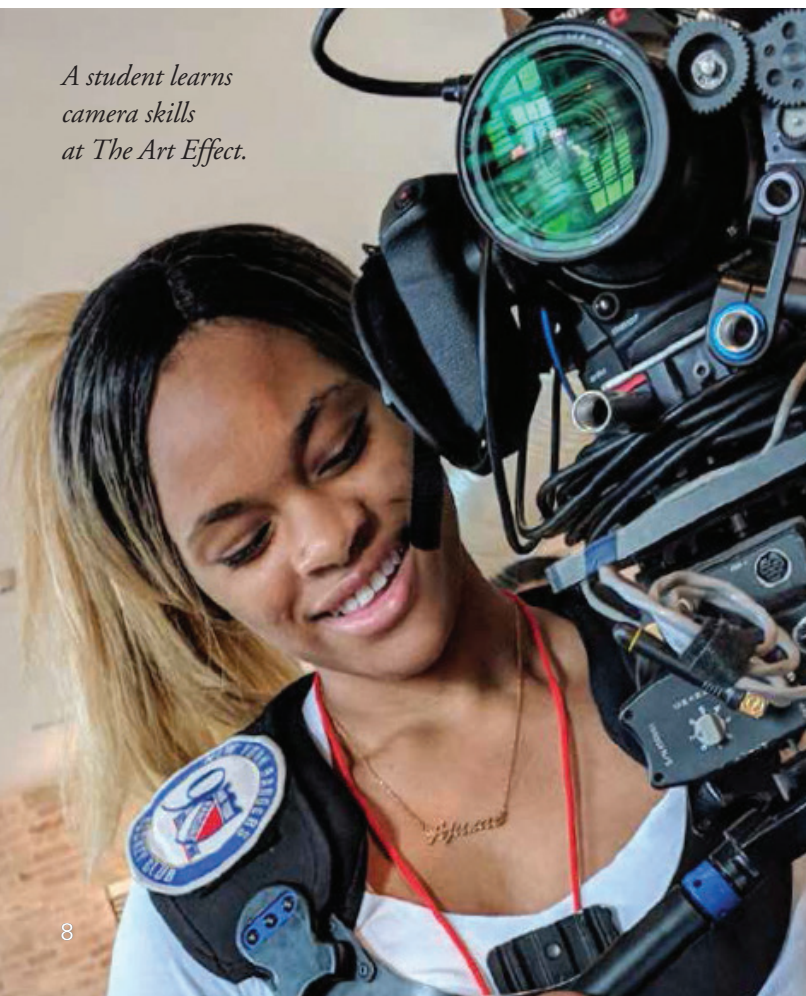
ment without the burdens of a private foundation. He took great pride in being able to establish this fund in memory of his mother, and continuation of his values."

Together they created the Leslie C. and Irene G. Roe Fund. Since the fund began awarding grants in 2014, more than \$630,000 have been distributed through agencies and scholarships. Matching his generosity with our investment strategy – even after significant grantmaking – the fund has grown 6% since it was established.

"Being a self-made man through successful enterprises Roe Moving Company and Leslie C. Roe Realty, Les would be pleased to know his gifts have a positive impact in the community, and will continue to do so for years to come," said Fred. 🌿

Company and Leslie C. Roe Realty, Les would be pleased to know his gifts have a positive impact in the community, and will continue to do so for years to come," said Fred. 🌿

*A student learns camera skills at The Art Effect.*



**As an expression of the Leslie C. and Irene G. Roe Fund's commitment to creating opportunities for youth,** in 2019 a grant was made to The Art Effect. Created by a merger of Mill Street Loft and Spark Media, The Art Effect empowers youth to develop their artistic voice to shape their futures and bring about positive social change. Programs provide training in visual and media arts, and give students the opportunity to develop real-world skills in these areas. With a grant from the Roe Fund, The Art Effect was able to provide students with scholarships – enhancing their abilities, building their portfolios and providing them with tools needed to succeed in college.

# Saland's Scholars

*2019 Saland Scholarship recipient, Rapheal Shepherd, accepts his award from CFHV Director of Special Projects, Aliza Krevolin.*



**"Your generosity has enabled me to focus on my studies.** Having grown up in the City of Poughkeepsie, and being a young father, your support isn't just for me – it is an opportunity to inspire other mothers, fathers, students and the community. Thank you for cheering me on my way!"

*Rapheal Shepherd, Senator Stephen M. Saland Scholarship recipient*

**Former New York State Senator Stephen Saland made a career advocating for Hudson Valley residents of NY's 41st Senate District.** During his tenure in the Senate, he authored more than 350 laws and chaired the Senate Codes, Education, and Children and Families committees.

At the culmination of his public service, an event was held to recognize his achievements on behalf of the community. To mark the occasion and support his wish to keep giving back, the event served as a fundraiser to support the causes Senator Saland and his wife Linda hold dearly. Proceeds established the Senator Stephen M. Saland Legacy Fund.

"Our community has been wonderful to us, and I feel privileged to have the opportunity to give back," Senator Saland said. "It was an honor and my great fortune to serve in the role I did,

creating policies and directing funds to programs that enhance the quality of life for our neighbors and communities. I enjoyed my time in office immensely, and always felt it was about my community, not me."

With the generosity of friends and colleagues, the Salands continue to give back. "As nearly lifelong residents of the area, Linda and I are proud to provide others with help to create a better future." Since its establishment in 2013, the fund has made 42 grants to a range of organizations. Following a conversation with their son Jesse, a counselor at Dutchess Community College, their grantmaking expanded to include a scholarship specifically for single parents.

"My work in the Senate exposed me to the broader challenges that single parents face, seeking to improve their quality of life and that of their children.



*Linda & Stephen Saland at the 2019 Garden Party*

What we heard from Jesse was impactful and offered new insight into how those barriers were keeping parents from achievement. Linda and I are gratified to know that our contributions can ease their plight, and help them in their pursuit of a path to greater opportunity for them and their children." 🌿

# Anonymous Giving



There are many reasons people give anonymously. Whether for privacy or the humble joy of offering without recognition—many of our donors support their favorite causes this way.

**The Community Foundations offers the option of anonymity to the generous people we work with,** by directing donations to a nonprofit recipient without donor attribution. “The Community Foundations provides us with a method for giving privately,” said one Ulster County couple of their anonymous grantmaking. They said, “we both serve on a variety of boards and committees. In some settings, it’s important for board members to give by name – and in others, giving can set you apart. Giving anonymously allows us both to participate and be perceived as a fellow colleague who shares in the work, values and concerns of the organization.

**“Partnering with the Foundations makes our philanthropy easy.**

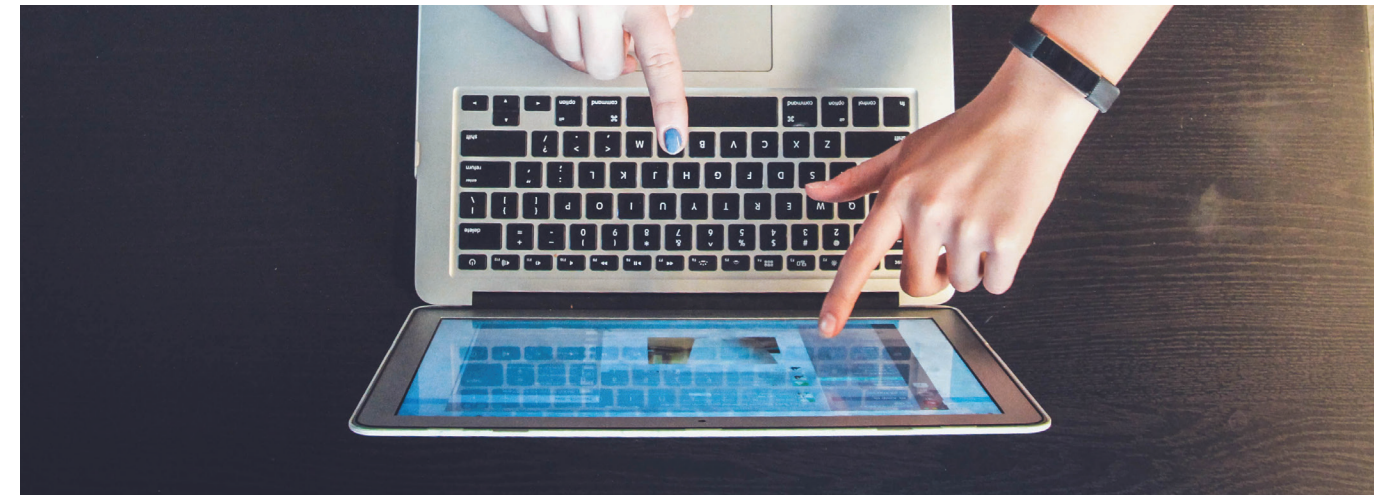
Grantmaking through them allows us to seamlessly give privately or not, and that is a great benefit.”

This keeps the priority on the mission, rather than the donor.”

“Partnering with the Foundations makes our philanthropy easy. Grantmaking through them allows us to seamlessly give privately or not, and that is a great benefit.”

In addition to occasional anonymous grants, the Foundations manages several anonymous funds. These funds have fully anonymous names, but behind each is a donor who thoughtfully and generously supports their favorite causes. While the nonprofits receiving their grants will never know their names, they will witness and benefit from the impact of the gift. 🌱

# The Power of Partnership



Professional advisors play a seminal role in the lives of their clients. They guide people to make choices and plans that fulfill their goals in both the short and long term.

**For 50 years, the Community Foundations has worked closely with professional advisors** to complement their services, with a focus on philanthropy.

One such advisor, Meredith Briggs CFP®, has worked with community foundations since she started her practice in Virginia in 2005. Upon moving to the Hudson Valley and meeting with clients in Poughkeepsie and Saugerties, Meredith connected with CFHV.

“I love working with community foundations because they help me to better serve the people I work with,” Meredith said. “They are a value-added resource for my clients, offering expertise in both philanthropic planning and what is happening in the community. In light of recent tax law changes, their depth of knowledge has been especially helpful in finding strategies and offering solutions to folks who want to give back.”



*Meredith Briggs, CFP®*

Accordingly, she asks new clients early on if their plans include philanthropy. “Given those strengths, I am eager to get the Community Foundations involved early on in the conversation. Doing so can transform a relationship, and the community at large.”

“It’s personally and professionally satisfying to enable my clients to invest in the community we share and love. Whether they are establishing funds to provide educational opportunities, protect the environment or make life better for our neighbors – the benefits are apparent and profound,” she continued.

“Ultimately, I can’t earn or save money on my clients’ behalf. However, I can be a partner who assists in making decisions that express their values and vision for the future. To that end, bringing Community Foundations into the conversation is adding another player to the team, to guide people to whatever it is they see as a victory.” 🌱

# A Party 50 Years in the Making

The first Garden Party was held in 1994 to honor our 25th anniversary. Former Trustee and Committee Member Susan Roeller Brown conceived of the format, which celebrates philanthropy in a relaxed and singular afternoon setting.

“This annual event continues to draw significant support and interest,” said Kevin Quilty, Vice President and lead organizer of the Garden Party. “Our typical format honors individuals and couples for their contributions, but in light of this milestone, there were simply too many worthy people to select. With guidance from the Garden Party committee, we decided to honor our whole community – since we are grateful to generations of people, families and businesses.”

## Making Meaning, Marking Time

“It was a unique and exciting challenge to create this year’s event,” Kevin continued. “To honor this milestone, we decided to acknowledge our path From Founders to the Future. To represent the past, we dug into our archives to reacquaint ourselves with our founding trustees and their families. We were especially keen to highlight the story of Jack Gartland and the McCann Foundation for their singular role in starting what would become the Community Foundations. It was instructive and inspiring to see how the founding principles of service and generosity have played out over decades of different leadership and community needs.

“To honor the present, we thanked everyone under the tent. Each person who attends the Garden Party gives

## The impacts of our annual event over time?

\$1.3 million in grants.  
 Nearly 4,000 unique guests.  
 Hundreds of volunteers.  
 All with one purpose: to applaud those who give back.



Keynote speakers Matt Stinchcomb and Jessica O. Matthews

back through our Community Grants program. Digging a bit deeper, most of the guests have a history that dates back years or decades. And thanks to a generous anonymous donor, five guests had the opportunity to be a CFHV grantmaker for a day. That direct experience highlights the way we work to help people of all means be philanthropic.”

The future was, as it always is, harder to script. For that, the Foundations made the biggest departure from their standard event. “The future represents an opportunity to express our gratitude for those who brought us this far – and, it invites people to contemplate what their vision and goals are,” Kevin said. “For that, we welcomed two guest speakers to offer remarks on the future of philanthropy and community-building. Jessica O. Matthews and Matt Stinchcomb represent individuals with local connections and global reach. Their work at the cutting edge of these fields [philanthropy and community-building] offered a sense of possibility to what the next 50 years could look like.”

More than 400 guests came together at the Mashomack Preserve Club—and were recognized as honorees. With gratitude for the innumerable contributions of our community, CFHV looks forward to continuing this vital work together. 🌱



### Pinnacle Sponsor

D’Arcangelo & Co., LLP

### Platinum Sponsors

Bruderhof Communities  
 Ralph E. Ogden Foundation  
 Nevill and Karen Smythe

### Gold Sponsors

Mike Arteaga’s Health & Fitness Centers  
 Basch & Keegan, LLP  
 Joel Canter  
 Central Hudson Gas & Electric Corporation  
 Dunkin’ Donuts  
 Michael Dupree and Michael Fleischer  
 Bernard and Shirley Handel  
 Sue Hartshorn/Montgomery Row  
 Deborah and Peter Krulewitch  
 Lakeland Bank  
 M&T Bank  
 Mackey, Butts & Wise, LLP  
 Marshall & Sterling Insurance  
 Marianne Murray and Rich Rowley  
 Herb Redl, Inc.  
 Rhinebeck Bank  
 Riverside Bank, a division of  
 Salisbury Bank and Trust Company  
 TD Bank  
 Tinkelman Architecture, PLLC  
 Ulster Savings Bank  
 Walkkill Valley Federal Savings and Loan  
 Williams Lumber and Home Centers



# We are proud to enable your philanthropy.

For 50 years, our fund holders have entrusted us with their generosity. These permanent funds as of June 30, 2019 reflect our donors’ commitment to investing in the betterment of our community, today and always.

## Donor Advised Funds

Anonymous (3)  
 Patrick and Barbara Adams Fund  
 Adelante Donor Advised Fund  
 Lucila Albinder Fund  
 Applewood Farm Fund  
 The Josh and Maria Aronson Fund  
 Assur-Rodrigues Fund  
 Robert G. Auchincloss Advised Fund  
 BANT Fund  
 Eli and Susan Basch Fund  
 Rosalie Beinstein Memorial Fund  
 Jeremiah E. Berk Donor Advised Fund  
 Berlin Family Fund  
 Melissa D. Bisaccia Memorial Donor Advised Fund  
 Fanny V.W. Boos Trust Fund  
 Maynard and Ferne Brownell Family Fund  
 Bunnell Family Donor Advised Fund  
 Canter Family Donor Advised Fund  
 Carroll and Wieck Charitable Fund  
 Thomas and Irene Chalmers Youth Development Fund  
 Ciminello Family Fund\*  
 City of Poughkeepsie PBA Charitable Fund  
 Conti Loneragan Family Fund\*  
 Cross Hahn Family Fund  
 John J. Cszimar Charitable Fund  
 T. J. Cunningham Family Fund  
 DaPuzzo Kilpert Charitable Fund  
 The Dates Fund  
 Elizabeth C. Davis Memorial Fund  
 Gladys E. Davis Charitable Fund  
 Carol W. and G. Vincent Dean Jr. Fund  
 Digestive Disease Center Charitable Fund  
 Dutchess County Bar Association Fund  
 Ann and Abe Effron Donor Advised Fund  
 Dana and Ira Effron Fund  
 William and Sadie Effron Fund  
 Ralph V. and Patti M. Ellis Donor Advised Fund  
 Elisabeth G. Ellis Fund\*  
 Richard S. and Harriet K. Fein Donor Advised Fund  
 Feldman-Kopstein-Stuts Fund  
 Katie Filiberti Memorial Fund  
 Fischer Belleville Fund  
 Jacob and Mollie Fishman Fund\*  
 Foundation for Community Health Fund  
 Frehling Family Donor Advised Fund  
 Freni Family Fund\*  
 Gallagher Family Donor Advised Fund  
 Garraghan Family Fund  
 Gellert Family Donor Advised Fund  
 Geremiah Fund  
 Stanley and Bette Greenwald Fund  
 Grimaldi Family Helping Hand Fund  
 Bernard and Shirley Handel Foundation Donor Advised Fund  
 Hauser Family Fund  
 Here Comes the Sun Fund  
 Ravi and Lata Hotchandani Donor Advised Fund\*  
 Hudson Valley Radiologists PC Fund  
 Roberto and Nicole Hull Family Fund  
 Hyde Park Rotary Clifford - Ulrich Fund  
 Anne E. Impellizzeri Fund\*  
 William J. Jacobs Fund\*  
 Barry G. Jordan Sports Fund  
 Joy Fund  
 Khurana Family Fund  
 King Family Fund  
 Kirchhoff Family Fund  
 Floyd Lattin and Ward Mintz Family Fund  
 Lucy I. Meyer Harrison Leclair Charitable Fund  
 Joseph C. Lei Memorial Donor Advised Fund  
 Lipschutz Family Donor Advised Fund for Vassar Temple  
 Lunt Family Donor Advised Fund  
 James and Elizabeth Manion Charitable Fund  
 Barbara Brown Markell Donor Advised Fund\*  
 Marzollo Family Fund  
 McCabe & Mack Donor Advised Fund  
 Dennis G. and Karen I. Meyer Charitable Fund  
 Meyer Family Fund  
 Charles J. and Mary Ringwood Miller Donor Advised Fund  
 Mitchell Fund  
 Dan and Mary Mullan Fund  
 The Noel and Armanda Fund  
 NoVo Fund  
 October Birthday Donor Advised Fund  
 John and Nancy O’Shea Charitable Fund  
 David and Randi Petrovits Fund  
 Darlene L. Pfeiffer Fund  
 Richard and Barbara Pierce Fund  
 Poughkeepsie-Arlington Rotary Fund\*  
 George A. and Catherine V. Quill Donor Advised Fund  
 Quilty Family Fund  
 Rainy Day Fund  
 Rhinebeck Grange P of H 896 Fund  
 Rhinebeck Rotary Club Fund  
 Judith Riedeburg Memorial Donor Advised Fund  
 William F. Ritcheske Donor Advised Fund  
 Ritter Family Fund  
 Rodrigues Foundation Donor Advised Fund

Jerome and Stella Rossi Family Donor Advised Fund  
 Rotary Club of Fishkill Donor Advised Fund  
 Robert Ryan Jr. Family Fund  
 Stephen Saikin-Frank E. Lucente Fund  
 Senator Stephen M. Saland Legacy Fund  
 Scanlan Family Fund\*  
 Irving and Gloria Schlossberg Family Fund  
 Jonah Sherman Family Fund  
 Valri C. Simmons Donor Advised Fund  
 Chip and Karen Simon Charitable Fund  
 Michelle D. Smith Fund\*  
 Russell J. and Judith H. Smith Fund  
 Soyer Family Donor Advised Fund  
 Howard K. Spieler Memorial Fund  
 Virginia L. Starke Donor Advised Fund  
 Stevens Family Fund  
 Stinchcomb Family Fund  
 Judith and Paul Stoddard Family Fund\*  
 Anne Parks Strain Flower Fund  
 Glenn B. Sutherland and Cynthia A. Lowe Fund  
 Sweetie Fund  
 Taconic IPA Donor Advised Fund  
 William and Marcella Teahan Memorial Fund  
 Thomas Family Fund  
 Through Dylan’s Eyes, the Dylan Feller Memorial Fund\*  
 Turk Family Fund  
 Abe & Eileen Uchitelle Fund\*  
 Peter and Ermina Van Kleeck Family Fund  
 Vassar Brothers Institute Donor Advised Fund  
 John and Vivian Wadlin Local History Donor Advised Fund  
 Lucie M. Walker Memorial Fund  
 Helen Mary Alice Watkins Donor Advised Fund  
 Ronald J. and Mellina Miller Weiss Fund  
 William B. and Grace Staub Weiss Donor Advised Fund  
 West Mountain Mission Fund  
 Whitefield/Baer Fund  
 Williams Family Donor Advised Fund\*  
 Ross Williams Family Fund  
 Williams Family Fund  
 Wollner/Trocchia Family Fund  
 Melissa Zukowski Memorial Fund

## Funds Supporting Specific Interests

Akindale Thoroughbred Rescue Designated Fund  
 Bertha Effron Fund  
 Marion Blankenhorn Art Appreciation Fund  
 Joanne Marie Brady Memorial Fund  
 Florence and Theodore Budnik Fund  
 S. J. Cahn Fund

Sadie Jane Effron Cahn Beacon Hebrew Alliance Endowment  
 Sadie Jane Effron Cahn Fund for Hebrew Education  
 Sadie Jane Effron Cahn Fund for Vassar College Landscaping  
 Margaret J. Campbell and Dorothy P. Campbell Fund  
 Cardiovascular Fund of Dutchess County  
 Charlie Carroll Music Enrichment Fund  
 Center for Performing Arts at Rhinebeck Endowment Fund  
 Robert R. Chapman Fund  
 Eleanor and Martin Charwat Charitable Fund  
 Children with Cancer Fund  
 Chilee Memorial Fund  
 David L. Church Fund  
 Cleopatra Fund  
 Clinton Community Library Fund  
 Joseph and Antoinette M. Czarnecki Memorial Fund  
 Thomas Czarty Fund  
 Dean Family Fund  
 Jill Battistoni Dickett Memorial Fund  
 Dorothy’s Marionettes and Puppets Fund  
 Stephen and Julia Dunwell Fund  
 John J. Durkin Development Fund  
 Dutchess County Arts Council Fund  
 Dutchess County Interfaith Council Fund  
 Ann and Abe Effron Fund for The Adriance Memorial Library  
 Ann and Abe Effron Fund for The Bardavon 1869 Opera House  
 Ann and Abe Effron Fund for The Hudson Valley Philharmonic Society  
 Farm Fresh Food Endowment Fund  
 Richard S. and Harriet K. Fein Fund  
 Stephen J. Feron III Memorial Fund  
 Four-Legged Ranger Fund  
 Fund for Excellence in Education  
 William E. and Alice H. Gifford Fund  
 John and Gloria Golden Fund for Hyde Park  
 Clara Lou Gould Fund for the Arts  
 Dr. Cy Gruberg Hebrew School Fund\*  
 Hartshorn Family Fund\*  
 Conrad and Ruth Heisman Beautification Fund  
 John M. and Beatrice R. Helmeier Fund  
 Laura Moody Hoskins Fund  
 HVFCU Financial Services Fund  
 JDM Fund  
 Ed and Barbara Joba Fund for the Hudson Valley Philharmonic  
 Mary Hart Keeley Memorial Fund\*  
 Doris Kelly Scholarship Fund for ERVK\*  
 Joan E. and Lawrence G. Korducki Foundation Fund  
 Lampell Fund for Vassar Temple  
 Denise M. Lawlor Fund  
 Local Economies Fund of the Farm Fresh Food Fund\*  
 Donald P. Love Fund  
 M&T Bank Endowment Fund  
 Mair Fund  
 Joseph J. Mastroianni Fund  
 McCabe & Mack Fund  
 McCann Ice Arena Dreams of Gold Foundation for the Promotion of Ice Skating Fund  
 Mary L. McKee Fund

Florence and Raymond E. Meagher Fund  
 Merola Family Memorial Fund  
 Mid-Hudson Valley Census 2020 Fund  
 Mintz Lattin Arts and Culture Fund\*  
 David Kennon Moody Fund  
 Keith J. Murphy Fund  
 Kathleen M. Murtaugh Fund  
 Margaret Murtaugh Fund for Education  
 August Noller Fund  
 Northern Dutchess Fund  
 Obadiah Designated Fund  
 John J. and Margaret M. Mulvey Fund  
 Poughkeepsie Boys Choir Fund  
 Poughkeepsie Day School Fund  
 Poughkeepsie Public Schools Foundation Fund  
 Premier Cares Foundation Fund  
 Prenting Family Fund for Poughkeepsie  
 Adelaide English Rafferty Fund  
 Edward P. Sr. and Margaret F. Ringwood Memorial Fund  
 Robert J. Rizzuto Volunteer Appreciation Award Fund  
 Robin’s Fund for Complementary Medicine  
 Leslie C. and Irene G. Roe Fund  
 Todd Samara Art Fund\*  
 Victor L. Sanko Fund  
 Jeannette F. Schlobach Fund  
 Scout Fund- Dutchess County Council- Boy Scouts of America  
 Scout Fund- Dutchess County Girl Scout Council  
 Ellen B. Shapiro Fund  
 Barbara and Richard Shea Fund  
 Sherman Reentry Fund  
 Sigma Xi Fund for the Dutchess Regional Science Fair  
 John T. Sloper Community Fund  
 Smith Metropolitan African Methodist Episcopal Zion Church  
 Jane Smithers Fund  
 Stanford Fund  
 Sandor David Strauss Shofar Fund  
 Benjamin R. Strong Opera Fund  
 Tomlinson Estate - Beacon Fund  
 Town of Wappinger War Memorial Trust Fund  
 John and Anne Van Benschoten Fund  
 Dr. Mary Louise Van Winkle Fund\*  
 Von der Linden Fund  
 Zack’s Angel Fund

## Nonprofit Organization Funds

Angels of Light Nonprofit Organization Fund  
 Athena Endowment Fund  
 Bardavon 1869 Opera House Endowment Fund  
 Bardavon Opera Fund  
 Beatrix Farrand Garden Association Endowment Fund  
 Cappella Festiva Endowment Fund  
 Cary Institute of Ecosystem Studies Endowment Fund\*  
 Center of Performing Arts at Rhinebeck Fund  
 Center for Spectrum Services Endowment  
 Chabad of Ulster County\*  
 Child Abuse Prevention Center Fund  
 Cottam-Singleton Endowment for LGBTQ Youth

County Players Theatre Fund  
 CultureConnect Fund\*  
 Dutchess County Historical Society Fund  
 Dutchess County Regional Chamber of Commerce Foundation Endowment  
 Dutchess County SPCA Fund  
 Dutchess Outreach Fund  
 East Fishkill Community Library Founders’ Endowment Fund  
 East Fishkill Historical Society Endowment Fund  
 Eleanor Roosevelt Center at Val Kill Fund  
 Family Services Heritage Fund  
 Friends of the Kingston Library Fund  
 Howland Chamber Music Circle Fund  
 Kingston Lions Club Foundation Fund  
 Klyne Esopus Museum Fund  
 Mediation Center of Dutchess County Endowment Fund  
 Mental Health America of Dutchess County Fund  
 Miles of Hope Breast Cancer Foundation Fund  
 Mohonk Preserve Nature and Environment Fund  
 Mount Beacon Incline Railway Restoration Society Fund  
 National Association For The Dually Diagnosed Fund  
 New Horizons Endowment Fund  
 O+ Sustaining Fund\*  
 Old Dutch Church/Newcombe Fund  
 Old Rhinebeck Aerodrome Fund  
 People’s Place Endowment Fund  
 Performing Arts of Woodstock Endowment Fund  
 Randolph School Endowment Fund  
 ReachOut Arts Endowment Fund  
 Reher Center Endowment Fund  
 Resource Center for Accessible Living Inc. Fund  
 Stanford Free Library Fund  
 Stone Ridge Library Directors Fund  
 Stone Ridge Library Foundation, Inc. Endowment  
 Ulster County Habitat for Humanity Fund  
 Ulster County Historical Society Fund  
 United Arts Center Fund  
 United Way of Dutchess County Endowment Fund  
 Walkway Over the Hudson Organization Fund  
 Women’s Studio Workshop Fund\*  
 Woodland Pond Benefit Fund  
 Woodstock Byrdcliffe Guild Fellowship Fund

## Scholarship Funds

Mary Abdo Fashion Memorial Scholarship Fund  
 Christopher Ambrose Memorial Scholarship Fund  
 Andrew David Arenson Scholarship Fund  
 Athena Scholarship Fund  
 Audrey Evert Citizenship Award Fund  
 James J. Austin and Jeannette VanWagenen Austin Fund  
 Baker Family Scholarship Fund  
 Justine S. and Stephen P. Becker Fund  
 Stephen P. Becker Scholarship Fund  
 Betty Benecke Memorial Scholarship Fund  
 Michael Benecke Scholarship Fund  
 Ronnie Berg Drummers Scholarship Fund  
 Melissa D. Bisaccia Scholarship Fund  
 Ben-Allen Breslow Memorial Scholarship Fund  
 Stephanie D. Brown and Barbara M. Murphy Memorial Scholarship Fund



Maynard and Ferne Brownell Family Scholarship Fund  
 Alexander Cervone Scholarship Fund  
 Joseph Chupay Memorial Award Fund  
 City of Poughkeepsie PBA Scholarship Fund  
 Brian Connolly Scholarship Fund  
 Brian Cook Memorial Scholarship Fund  
 Jennifer Coudrey Memorial Scholarship Fund  
 John J. Csizmar Scholarship Fund  
 I. Ann Davidson Scholarship Fund  
 John F. DeGilio Science Scholarship Fund  
 Cosimo DiBrizzi Scholarship Endowment Fund  
 Doherty - Package Pavement Company Scholarship Trust Fund  
 Ryan G. Doherty Memorial Scholarship Fund  
 Judith Mitchell Drabkin 'On My Own' Scholarship Fund  
 Elena Eckert Memorial Scholarship Fund  
 Dana Efron Scholarship Fund  
 Marshall R. Efron Fund in Honor of the Poughkeepsie High School Class of 1938  
 Empire State Towing Association Scholarship Fund  
 Through Dylan's Eyes, the Dylan Feller Memorial Scholarship\*  
 Katie Filiberti Memorial Scholarship Fund  
 Bret Alan Frattellone Scholarship Fund  
 Joseph H. Gellert - Dutchess County Bar Association Scholarship  
 Christopher M. Gent Memorial Scholarship Fund  
 Melissa Gleichenhaus Choral Leadership Scholarship Fund  
 Natia Gorgen Award Fund  
 Robert K. and Clara Lou Gould Memorial Scholarship Fund  
 Frank Thomas Groff Scholarship Fund  
 Joseph S. Guarneri Sr. Memorial Scholarship Fund  
 Sandy Hamilton Scholarship Fund  
 Eileen Hickey Nursing Scholarship Fund  
 Alecia Hicks Forster Fund  
 Brooke Horton Memorial Scholarship for Theatre Arts Fund  
 Betty Howard Fund  
 Helen H. Huntington Memorial Scholarship Fund  
 Hudson Valley Financial Professionals Scholarship Fund  
 Hudson Valley Guns and Hoses Scholarship Fund  
 David Jagaciewski Scholarship Fund  
 JFK Scholarship Fund  
 JJD, McCann Scholarships Fund  
 Michalene D. and Michael R. Joseph Memorial Scholarship Fund  
 JTN Scholarship Fund  
 Lorien Ninie Kimlin Scholarship Fund  
 Paul S. Kleidman Memorial Scholarship Fund  
 Jeanne C. and Howard C. Knauss Science Scholarship Fund  
 Martin Laforse Memorial Scholarship Fund  
 Juan Lafuente Memorial Scholarship Endowment Fund  
 LaGrange Soccer League Scholarship Fund  
 Jay Lamando Scholarship Fund  
 Steven and Linda Lant Family Scholarship Fund  
 Ricky Lombardo Scholarship Fund  
 Russ Mann Memorial Scholarship Fund  
 Dennis J. Markle Memorial Scholarship Fund

Mary McKenzie Memorial Scholarship Fund  
 Joseph H. and Mildred C. McManus Scholarship Fund  
 Mark Milano Scholarship Fund  
 Miles of Hope Breast Cancer Foundation Scholarship Fund  
 Ronald W. Miller Fund  
 Richard W. Mitchell Memorial Scholarship Endowment Fund  
 Lisa Moray Memorial Scholarship Fund  
 Edward A. and Ellen H. Mulvey Fund  
 Michael P. Murphy Public Service Scholarship Fund  
 Patrick G. Nestler Scholarship Fund  
 Paula S. Neustat Scholarship  
 Hyde Park Rotary William J. Nichols Medical Scholarship Fund  
 Charles S. North Scholarship for Music Fund  
 Norman and Rita Nussbickel Memorial Scholarship Fund  
 Ruth Oja Environmental Scholarship Fund  
 Honorable Anthony L. Pagones Memorial Scholarship  
 Sgt. Mark C. Palmateer Memorial Scholarship Fund  
 Luigi and Elisa Panichi Memorial Scholarship Fund  
 Steven A. Parascandola Art Scholarship Fund  
 Pawith Educators Scholarship Fund  
 Kim Anne Pedersen Memorial Scholarship Fund  
 Poughkeepsie City School District 5th Grade Graduation Award  
 Poughkeepsie City School District Foundation Scholarship  
 Poughkeepsie High School Class of 1958 Scholarship Fund  
 Zach Dalton Pruner Memorial Scholarship Fund  
 George A. and Catherine V. Quill Scholarship Fund  
 Caring Fund in Memory of Patricia Racicot  
 Red Hook Grange Scholarship Fund  
 Cheryl Ann Reis Memorial Scholarship Fund  
 Coach Robert Relyea Scholarship Fund  
 Rhinebeck Community Scholarship Fund  
 Marjorie A. Rifenburg Memorial Scholarship Fund  
 Maria E. McCarthy Ringwood Memorial Scholarship Fund  
 Acacio "Roger" Rodrigues Memorial Scholarship Fund  
 Beatrice and David Rosenthal Memorial Scholarship Fund  
 Rotary Club of Wappingers Falls Inc. Scholarship Fund  
 Leah Ryan's Fund for Emerging Women Writers  
 Arthur R. Satz Memorial Scholarship Fund  
 H. Normington Schofield Scholarship Fund  
 Helen and William Schwerman Memorial Award Fund  
 Claudia Ann Seaman Award for Young Writers Fund  
 Steven N. Siciliano Memorial Scholarship Fund  
 Shane L. Smith Scholarship Fund  
 Southern Dutchess Exchange Club Youth Achievement Fund  
 Springfield Baptist Church - Rev. Mattie Cooper and Jack Cooper Sr. Scholarship Fund  
 St. Joseph School Scholarship Fund  
 St. Stanislaus Knights of Columbus Scholarship Fund  
 Jim Steinmeyer Scholarship for Excellence Fund  
 Lida Stewart Memorial Fund  
 Maureen and Stan Straub Scholarship Fund  
 Nora Zeller Strudwick Memorial Scholarship Fund

Christopher M. C. Ulanmo Memorial Scholarship Fund  
 I. Budd Venable and Naomi A. Venable Golf Scholarship  
 Andy Vito/Harold Tompkins/Ron Vece Scholarship Fund  
 Dennis Edward Walden Scholarship Fund  
 Marie Whearty Exceptional Effort Award Fund  
 Justine Winters Memorial Scholarship Fund  
 Kathleen H. Zwissler Memorial Scholarship Fund

**Unrestricted Funds**

Administrative Endowment Fund  
 Area Fund of Dutchess County Fund  
 Rosalie K. Ballien Fund  
 Charles and Fanny V.W. Boos Fund  
 Todd and Beverly Brinckerhoff Fund  
 Allison and Arrie Mosher Butts Memorial Fund  
 C.G. and R. Fund  
 Bunny and Steele Cameron Fund  
 Robert N. and Mary Ellen Chambers Fund  
 Robert N. Chambers Board Designated Fund  
 Community Foundation Trustees Endowment Fund  
 Community Grants Endowment - Dutchess County  
 Community Grants Endowment - Putnam County  
 Community Grants Endowment - Ulster County  
 John J. Csizmar Fund  
 Cunneen-Hackett Foundation Fund  
 Deborah and Noel deCordova Fund  
 Irving Feldman Fund  
 John F. Foley Memorial Fund  
 Lester H. and Kathryn E. Freer Fund  
 Fund for Dutchess County  
 Fund for Putnam County  
 Fund for Ulster County  
 Fund for the Hudson Valley  
 Catharine M. and John J. Gartland Jr. Fund  
 Greenspan Family Fund  
 Robert Hoe Memorial Fund  
 Ilse Holzer Fund  
 HSBC/Marine Midland Bank Fund  
 Brett Hunt Memorial Fund  
 Byron V. Losee Fund  
 Maud W. MacMurray Fund  
 Margaret W. Mair Fund  
 James J. McCann Fund  
 Mary Catherine McCarrick Fund  
 Henry and Janice Meagher Fund  
 Richmond F. and Margaret S. Meyer Fund  
 Donald A. and Virginia H. Moore Memorial Fund  
 Thomas W. Murphy Jr. Fund  
 Clifford and Jane W. Nuhn Fund  
 Genevieve C. O'Brien Fund  
 Joseph L. Petz Fund  
 Samuel and Freda Reifler Fund  
 Leonard E. Simon Charitable Fund  
 Thomas Sweeney/Darby O'Toole Fund  
 John E. Taylor Memorial Fund  
 Charles J. and Frances M. Turck Memorial Fund  
 John B. Woodward Fund  
 Robert and Patricia Wright Fund

**Gift Acknowledgments**

*Your gifts improve lives and invest in the future of our community.*

We are grateful to the following donors who made gifts to the Foundations between July 1, 2018 – June 30, 2019.



*Students of the Family Services TRAC Program learning computer skills.*

Anonymous (4)  
 1915 Wine Celler  
 325 Albany Avenue LLC  
 A&Z Trucking Inc.  
 A.J. Recycling Inc.  
 Michael L. and Susan Abbatemarco  
 David J. and Frances M. Abdo  
 Abilities First Inc.  
 Able Rigging Contractors Inc.  
 Mary Abrams  
 Absolutely Automotive Inc.  
 Noelle Adamo  
 Adams Fairacre Farms Inc.  
 Donald Adams  
 Doris K. Adams  
 Patrick and Barbara Adams  
 Adtin, Inc.  
 AECOM Technical Services  
 Jeanine Agnolet and David Rado  
 Felipe Aguilar and Mark Taylor  
 George Ahl  
 Robert and Lee Ann Ahlin  
 Aziz Ahsan, Esq. and Sadaf Ahsan, MD  
 Clara Aich  
 Frank Alba

Suellen M. Albahary  
 Harold Albinder  
 Alexith Diner  
 Elizabeth Peale Allen  
 Virginia S. Allison  
 Milagros Alvarez  
 The Adam F. and Judith H. Ambielli Foundation  
 Frank Jr. and Kathleen Ambrose  
 Anthony J. and Julia Amodeo  
 Rebecca J. Anderson  
 Bryant Andrews  
 Carmen A. Angelone  
 Anthony M. Pascale, DDS  
 Jacquelyn Appeldorn and D. David Conklin  
 Bettina Aptheker  
 MC Corp. d/b/a Aquario Restaurant  
 Elena Araoz  
 Christine Arenella  
 Arlington Professional Firefighters Local 2393  
 Armbrust Inc.  
 Sara M. Arnon  
 Arold Construction Co. Inc.  
 Barbara D. Arrindell  
 The Art Effect  
 Mike Arteaga's Health & Fitness Centers

Arthur DeDominicis CPA & Consultants  
 AT&T  
 John J. Atherton and Anne Mitchell Atherton  
 Shawn L. Auchmoody  
 Arlene V. Avakian  
 Cynthia Babat  
 Jason H. and Iris Bacher  
 Stella Bae  
 Bailey Pottery Equipment Corporation  
 David and Mary Baker  
 James E. and Ellen Baker  
 Sybil K. Baldwin  
 William J. and Karen A. Baldwin  
 Steven J. Ball  
 Bank of Greene County  
 Bank of Millbrook  
 William Barbash  
 Megan Barbera  
 Richard S. and Carleen Baright  
 Dennis M. Barnett  
 James and Marie Barnett  
 Baroni Recycling Inc.  
 Richard V. Barry  
 Eli and Susan Basch  
 Laura Basen

*Students learn carpentry at the NorthEast Community Center.*



Michael Gold

Robert C. and Marianne C. Basner  
 Kathleen Basso  
 Fredrick and Suzanne Battenfeld  
 Richard B. and Muriel E. Battistoni  
 Elizabeth L. Bautz  
 Francis X. and Eileen Baxter  
 Alice D. Beal Trust of New York Community Trust  
 Kimberly Beckius  
 Beekman Arms-Delamater Inn Inc.  
 Paul and Jennifer Beichert  
 Stanley Beinstein  
 Bella Lawns  
 Adam and Nancy Belok  
 Renate Belville  
 Bentley Corporation  
 Ronald A. Berg Sr.  
 Honorable Jeremiah E. Berk  
 Irene Berner CFP, CDFA  
 John J. and Carolyn Bernitt  
 Peter and Michalina Bickford  
 David and Rebecca Blahut  
 Barbara Blas  
 Jeffrey and Alyssa Blick  
 Michael I. Blick  
 Richard K. and Ruth E. Blodgett  
 Blue Smoke BBQ  
 Hans G. and Mary Boehm  
 Henry and Jayne Boehring  
 Jacob C. and Kristi L. Bogaczyk  
 William F. Jr. and Carol A. Bogle  
 Boiceville Inn  
 Lynn Bondar  
 Bonura Hospitality Group/Waterfront Management LLC  
 Stacey and Maureen Bowers  
 Eliza Bozenski  
 John F. Braca  
 Honorable James C. Francis and Elizabeth Bradford  
 Jean Brady  
 Theodore and Melissa Braggins  
 The BRD Living Trust

Warren A. and Julie Breakstone  
 Patricia Breen  
 Beau and Priscilla Brendler  
 Darrelyn A. Brennan, CFP  
 William A. and Joy H. Brenner  
 Brennie's Pizza II Inc.  
 Peter J. and Christina Brent  
 Brian J. McCarthy Inc.  
 Bridgehampton National Bank  
 Bright Funds  
 Victor and Diane Britton  
 Brooks & Brooks Land Surveyors PC  
 Alfred and Susan Brooks  
 Robert and Shelley Brous  
 Brian M. and Meredith Brown  
 James R. Brown  
 Joy Brown  
 Susan Soeller Brown and Langdon Brown  
 William and Geraldine Browne  
 Richard and Nancy Rossi Brownell  
 Susan Buckler  
 Mary Bucksbaum Revocable Trust c/o  
 MB Investments LLC  
 Melva Bucksbaum Family Foundation  
 Rhonda A. Bugg  
 David Bukovac  
 James and Dorothea Burgess  
 Mary G. Burns  
 Burstein-Fahie Family Fund  
 Wendy Bush Lyons, Esq.  
 Robert R. Butts  
 Michelle H. Caccavano  
 George and Noel Cacchio  
 W. Stewart and Sandra F. Cahn  
 Thomas W. and Marybeth Cale  
 Anne Campbell  
 Thomas and Ba Campbell  
 Virginia L. Cannon  
 Joel Canter  
 Captains Table of Monroe NY Inc.

Cardinal Court Apartments LLC  
 Anthony and Susan Careccia  
 Lisa Carino  
 Carpenter Law PLLC  
 Alexander and Glenda Carpp  
 Julia Carr  
 Carret Asset Management LLC  
 Seamus Carroll and Marie Wieck  
 Margaret V. Carter  
 Cary Institute of Ecosystem Studies  
 John and Susan Cary  
 Catholic Charities Community Services of  
 Dutchess County  
 Catskill Hudson Bank  
 Cement and Concrete Workers Union Local 18A  
 Cement League Advancement Program  
 Central Hudson Employee Matching Gift Program  
 Central Hudson Gas & Electric Corporation  
 Marissa Cerchia  
 Chabad of Ulster County  
 Glen and Amy Chalmers  
 Robert Chambers  
 Peter W. and Katherine F. Charapko  
 Martin and Eleanor Charwat  
 Joyce A. Chatfield  
 The Chazen Companies  
 Mohsin M. Cheema  
 J. Diana Chesmel  
 Barbara Chianese  
 Gabriel and Terry Chiarieri  
 Steven and Denise Chickery  
 Children's Home of Poughkeepsie  
 Christopher E. Chin  
 Christ Episcopal Church  
 Lynda and Jeff Christensen  
 Church Communities Foundation  
 Paul and Andrea Ciminello  
 Renzo G. Cinti  
 Citrix Systems Inc.  
 City of Poughkeepsie  
 Citywide Container Service  
 Melissa V. Clapp  
 Joanne S. Clarke and L. Tremper Saltsman  
 Owen T. Jr. and Linda B. Clarke  
 Lynn Clarke  
 Claudio Cares Foundation Inc.  
 John J. and Amber Clavin  
 David J. Clegg, Esq.  
 Hayes Clement  
 William N. and Kathleen Cloonan  
 Michael Closter and Jennifer Kleban  
 William Clutz  
 Jerome R. and Cecilia Cogdell  
 Joseph and Barbara Cohen  
 Lita J. Cohen, Esq.  
 Rick P. Colasacco  
 Helen Colby  
 Richard and Norene Collier  
 Committee to Elect Adrian Butch Anderson  
 Committee to Elect Nina Postupack  
 Community Foundation of Orange & Sullivan  
 Comparetto's Bakery Inc.  
 Michael W. Compton and Jillian M. Walsh  
 Juanita C. Condon  
 John and Nancy Conklin

Denise B. Conlan  
 Daniel B. Conna  
 Raymond and Diane Constantine  
 Construction Innovations Co. Inc.  
 Convenient Deli Mart  
 Santha E. Cooke  
 Brad D. Cookinham  
 Scott and Rebecca Cookinham  
 Howard Coons Jr.  
 James and Carolyn Copeland  
 Joseph A. Coplin  
 Robert J. Cotter and Kate O'Keefe  
 County Players Inc.  
 Austin and Lois Cox  
 CR Properties Group LLC  
 Cusi C. Cram  
 Jeremy B. Crandall and Adam Kerzner  
 Jean H. Crawford  
 Margaret L. Crawford  
 Cronomer Valley Fire Department Inc.  
 Sally J. Cross  
 Neal and Rebecca Crosson  
 Kenneth B. and Mary Crutchfield  
 CultureConnect  
 T. Jefferson Cunningham III  
 Wendy W. and Amanda A. Cunningham  
 Curto's Inc.  
 Customlnk LLC  
 Corey L. Cutler  
 J. Cutrone Inc.  
 James Cypher  
 Deirdre d'Albertis and Peter Gadsby  
 James E. Daly  
 Robert W. Dandrew  
 Victoria L. Danskin  
 Jeffrey P. DaPuzzo and Robert H. Kilpert  
 D'Arcangelo & Co. LLP  
 John and Sandra Daubman  
 James F. and Nancy Davenport  
 William and Matilda Davenport  
 James W. Davidson and Mary Untalan  
 Sarah Davis  
 Marie A. De Masi  
 Dead Radio Podcast  
 Norman and Cindy T. Dean  
 Timothy and Alicia Dean  
 Edwin and Judith S. Deane Leonard  
 Claire DeBlois-Murtaugh  
 Mary K. Dechard  
 John and Adella Decker  
 John F. and Barbara DeGilio  
 John Delulio  
 Katherine DeKoster  
 Dennis M. Dengel  
 Richard and Michelle Dentico  
 John Jr. and Alice DePaoli  
 Depew Energy Co.  
 The Design Library  
 Fred and Maria DeWald  
 Dina M. DiFolco  
 Frank and Felicia DiFolco  
 Dikeman Engine and Hose Co. No. 3 Inc.  
 Arthur DiNapoli  
 Joseph L. and Corrinne DiVestea  
 Jean S. Dobson

Dock Street Realty Inc.  
 Doherty Corporation  
 Frank J. Doherty  
 Doka USA Ltd.  
 Patrick and Heidi Dolan  
 David and Mary Doll  
 Fred and Jean Doneit  
 Juliana Doyle  
 Tiffany Doyle  
 Brian Drabkin and Elena Burg  
 Jennifer L. Drake and Bill Muller  
 Georgene S. Dreishpoon  
 Deborah C. Duke and Steve Rosenberg  
 Michael F. Dupree and Michael E. Fleischer  
 Dutchess County Agricultural Society  
 Dutchess County Deputy Sheriff PBA  
 Dutchess County EMS Council  
 Dutchess County Sheriff's Employee Association  
 Dutchess Property Maintenance  
 Dutchess Rebar Fabricators LLC  
 Dutchess-Fairview Firefighters - IAFF Local 2623  
 Richard R. DuVall and Lisa E. Rubenstein  
 Sari L. Dweck  
 Peter A. and Helen Dykeman  
 The Dyson Foundation  
 East Fishkill Historical Society  
 Stephen and Maryanne Eckelman  
 Eddie's Gourmet Pizza  
 Rebecca Edwards and Mark Seidl  
 EFCO Products Inc.  
 Steven L. and Amy R. Efron  
 Beatrice Ehrsam  
 Eleanor Eilenberg  
 Harold and Valery Einhorn  
 Arthur Eisenberg  
 Eleanor Roosevelt Center at Val-Kill  
 Elisabeth Gaynor Ellis  
 Robert and Setsuko Ellsworth  
 Brian and Gretchen Eltz  
 Joseph C. and Geralyn M. Ely  
 Randolph R. Estwick  
 Catherine Eusebio  
 Rachel M. Evans  
 Timothy L. Every  
 EVK Realty LLC  
 F.W. Battenfeld and Son  
 Adam J. Fachler  
 Stacey A. Factor  
 Cliff Faintych and Deborah Graziano  
 Sean R. Fallon  
 John F. Fallon  
 Thomas Jr. and Jennifer Fallon  
 Family Services Inc.  
 Paul Fargis  
 Faviana Export Inc.  
 John V. and Nancy Fedigan  
 Steven and Raffaella Feinstein  
 Jill Feller  
 Ferrara Lumber Corp.  
 Ralph and Kathryn Ferrusi  
 J. Keith and Ann Marie Festa  
 Linda Filiberti  
 Fino & Associates  
 Fishkill Police Officers Association  
 Jacob & Mollie Fishman Foundation

Irene T. Fitzgerald  
 James Fitzgerald  
 Joseph Fitzgerald  
 Paul Fitzpatrick Jr.  
 Linda L. Fleckenstein  
 Peter F. and Joan R. Flynn  
 Angelo M. Foglia  
 Clifford and Catherine Foley  
 Food Bank of the Hudson Valley  
 Claudia Forest  
 The Honorable Peter and Anne Forman  
 Margaret K. Forster  
 Keith Fortunato  
 Joanna Frang and Mark Debald  
 Michael and Cecily Frazier  
 Deborah Freedman  
 Freedom Ford Inc.  
 Norbert and Linda Freisitzer  
 Charles A. Jr. and Liz Freni  
 Friends of Mike Hein  
 Friends of Morgenthau  
 Friends of Seniors of Dutchess County Inc.  
 Friends of the Kingston Library  
 Friends of the Starr Library  
 Raymond F. Jr. and Klaudia V. Frizzell  
 Alvin and Ginger From  
 Richard Frumess and Pamela Blum  
 Ira and Eileen Fusfeld  
 March S. Gallagher, Esq.  
 Donald J. Gallo, Esq.  
 Donald and Lillian Gallo  
 Jane Garrity and Frank Serokosz  
 Joyce D. Gartrell  
 Ellen Garvey  
 Sara F. Gast  
 The GE Foundation  
 John and Christine Geisler  
 Arthur L. Gellert, Esq.  
 Roksolana L. Geramita, CPA  
 Geraldine Gerencser  
 Mary Meeker Gesek  
 Marie Gibson-Price  
 Meri Beth Giewat  
 Caroline J. Gifford Living Trust  
 John K. and Ann Gifford  
 Dawn M. Gillespie  
 Russell E. and Susan M. Gilmore  
 Joseph K. Jr. and Elise M. Glaser

*Freshly gleaned green beans from Second Chance Foods, Inc.*



Gerardo Berliner

Global Tel\*Link Corp.  
 Miriam Gold  
 RonDavid and Carol Super Gold  
 Edward J. III and Marianna Golden  
 Justin Goldman  
 Barbara Goldstein  
 Brenda S. Goldstein  
 Paul and Sheridan Goldstein  
 Wendy C. Goldstein and Joshua J. Feldman  
 Maria Golowaty  
 Good Will Fire Department  
 Gail H. Goodman  
 Jack and Fredrica Goodman  
 Google Inc.  
 Anne M. Gordon  
 Goshen Fire Council  
 Elizabeth Gould  
 Naomi S. Gabel and Neil A. Kutner  
 Grace Smith House  
 Jeffrey S. and Elizabeth Graham  
 Michael and Clare Graham  
 Christopher M. and Susan E. Green  
 Raymond L. Greenberg  
 Kirsten A. Greene and Leon S. Greene  
 John M. Greener  
 Stuart and Judith Greenfield  
 Stephanie Greenwood  
 Mark R. and Anahid Avakian Gregg  
 Devin Gregorio  
 Ann Greising  
 Mark and Nancy Griffin  
 Grimaldi Portfolio Solutions Inc.  
 Douglas and Cecilia Gschwind  
 Carla Gude  
 Eugene S. and Christina Guiney  
 Vicki L. Haak and Spero Z. Chumas  
 Robert and Doris Wexler Haas  
 Alice Haberski  
 Barbara A. Hadden  
 Craig A. and Elizabeth D. Haight  
 Tony Hall and Matthew Snyder  
 Frances Halsband, FAIA  
 Helen Hamada  
 Ali and Jennifer Hammoud  
 Hampton by Hilton  
 Bernard and Shirley Handel  
 Ann H. Hanover  
 Carolyn E. Hansen, Esq.  
 Peter and Sara-Jane Hardman  
 Greg and Margie Murphy Harlin  
 Margaret D. Harnan  
 Rory Harris  
 The Hartford  
 H. James and Tara Hartley  
 Sue Hartshorn  
 Jean Taylor Hartwig  
 Robert R. Haskins  
 Halema Hassan  
 Guy and Mary Hathaway  
 Jeff and Karen Hatter  
 Havenvue Pilates & Movement LLC  
 Hawthorne Valley Association Inc.  
 Elizabeth Hayes  
 Tim and Beth Hayes  
 Paul and Melinda Heady

Health Quest Systems Inc.  
 Paul M. Jr. and Cynthia Hebert  
 Heights Lumber Center Inc.  
 Donald F. Heisel  
 John J. and Cecilia Heller  
 Louise Hemmert  
 Michael E. and Lisa Henderson  
 Susan Hereth  
 Cynthia I. Herivaux  
 Virginia P. Herman  
 Michael R. Hettinger  
 Louisa Heyward  
 Kathleen M. Hickey and Gary Banks  
 Ronald Hicks  
 Mayra Hidalgo Salazar  
 Highland Engine Co. #1 Inc.  
 Highland Valley Supply Inc.  
 Linda Hinderstein  
 David L. and Jane Hoffman  
 Roger and Pamela Hoffman  
 Gary Hohenberger  
 Daniel T. and Michele Holmes  
 Frank Holmquist and Mary Hoyer  
 Honest Brewer LLC  
 Hopewell Animal Hospital  
 Constance Hornbeck  
 Muriel W. Horowitz  
 Rhoda Horowitz  
 Ravi & Lata Hotchandani Foundation Inc.  
 Patricia L. Houk  
 Janet Houston  
 Margaret C. Howe  
 Ellen B. Hubbert  
 Hudson Land Design Professional Engineering PC  
 Hudson River Maritime Museum  
 Hudson Valley Current  
 Hudson Valley Federal Credit Union  
 Hudson Valley Foot Associates LLP  
 Hudson Valley LGBTQ Community Center Inc.  
 Hudson Valley Pattern for Progress  
 Hudson Valley Warthogs MC Inc.  
 Nicole and Roberto Hull  
 Michael J. Humbert  
 Ronald and Doris Hummel  
 Kimberly Hunt Lee and Brian P. Lee  
 Steven S. Hutkins and Robin A. Knauth  
 Hyde Park Cafe Inc.  
 Hyde Park Fire Dept. Inc.  
 Hyde Park Rotary Inc.  
 Tsontcho and Ms. Elina Ianchulev  
 IBM - International Business Machines Corporation  
 Anne E. Impellizzeri  
 Judith B. Inosanto  
 Integrity Land Services LLC  
 Michael and Elizabeth Irwin  
 William J. Jacobs  
 Janus Henderson Investors  
 Jaymark Jewelers Inc.  
 Jesse J. and Tyler W. Jenner  
 Florence L. Jerdan  
 Jewish Communal Fund  
 Jewish Federation of Dutchess County Inc.  
 Jewish Federation of Delaware  
 JNJ Ventures LLC  
 Edwin L. Joba

Nicholas J. Johannets, CPA  
 Arnold Johnsen  
 Johnson & Johnson Matching Gifts Program  
 Ellen Meredith Johnson  
 John W. and Jill Johnson  
 Margaret A. Johnson  
 Meredith Johnson  
 Rhea Johnson  
 Anita Jones  
 Thomas E. Joseph  
 Stephen D. Kahn and Ben J. Lombardi  
 Allen and Susan Kaiden  
 George J. Kaknis, OD  
 Richard and Claire Kamp  
 Eleanor C. Kane, M.D. and Michael A. Kane  
 Edward F. and Sandra L. Kane  
 Miliann Kang  
 Steven and Jill Kaplan  
 The William and Elaine Kaplan Family  
 Private Foundation  
 Lewis J. Kass  
 Kassell Family Foundation  
 Eileen Katatsky and Ronald Augustine  
 Ketu Katrak  
 Alan S. Katz and Robin C. Gelburd  
 Robert S. Katz, Esq.  
 Marc Katzman  
 Peggy Kauffman  
 Deborah Kaufman  
 Simon and Erna Kaufman  
 Walter Kaufman  
 Brennan Kearney  
 Edith A. and Paul L. Keck  
 Maureen Keegan and David Bolles  
 David Keeley  
 James Keeley  
 Catherine Kelly  
 Estate of Doris F. Kelly  
 William and Kathleen Kelly  
 Sharon Kelsch  
 Ken Fleck's Black Cherry Tattoo LLC  
 Kent Volunteer Fire Department  
 Kent Yoga and Bodyworks LLC  
 David and Janet Kettler  
 Sarah Kilborne  
 Henry L. Kimelman Family Foundation  
 Rabbi Jason Kimelman-Block  
 Kingston Midtown Arts District  
 Kingston Nissan  
 Kingston Plaza Promotional Fund  
 Mary E. Kirk  
 Kish Builders  
 Jeffrey D. and Virginia B. Kissling  
 Donald Kivell  
 Tod and Diana Klebanoff  
 Joan L. Kleinegriss  
 Klyne Esopus Historical Society Museum  
 Stephen C. and Elizabeth Knauss  
 Michael J. Knipfing  
 Steve Kohn  
 William Kopp  
 Betsy Kopstein-Stuts and George Stuts  
 Lawrence and Joan Korducki  
 Howard and Jane Korn  
 KoscoHeritage



Gerald Berliner

Participants of Leaders at the Helm aboard the Hudson River Sloop Clearwater.

Thomas and Jamie Koshy  
 Benjamin N. Krevolin and John Sare  
 Joan G. Krieg  
 Deborah and John Kudzia  
 Scott G. Kyreakakis  
 Laborers' International Union of North America  
 Local 235  
 Laborers International Union of N.A. Local 17  
 Robert and Carole LaColla  
 Frank and Patricia Lagrippa  
 Lakeland Bank  
 Mark S. Lalin and Associates  
 Dana Lamanna  
 LaMela Sanitation Service Inc.  
 Muriel Lampell  
 Clifford R. and Josephine M. Lancaster  
 Steven and Linda Lant  
 Jeffrey Larris and Mindy Duitz  
 Anthony and Patricia Lassiter  
 A. Floyd Lattin and Ward L. E. Mintz  
 Christopher J. and Michele D. Lauro  
 Law Offices of Michel P. Haggerty  
 LCS Facility Group Inc.  
 Todd and Phebe Leary  
 Christina M. Lee  
 Cynthia Lee  
 Madeline Lee  
 Roxana Lehmann-Hautt and Lou Bruno  
 Nadine Lemmon

William J. and Onalova Lenehan  
 Roger and Bernice Leonard  
 Lewis & Greer PC  
 Amanda Lewis and Thomas Springer  
 Col. Charles S. and Carol Ann Lewis  
 Christopher M. and Lauren M. Lewis  
 Lou and Candace Lewis  
 Maida J. Lewis  
 Marjorie Lewis  
 Richard Lewit and Alison Guss  
 Ken Levinson  
 Geoffrey Lieberman and Sara Effron  
 Richard K. Lieberman and Susan Farkas  
 Life Energy Foundation Inc.  
 Haynes Llewellyn  
 Mindi W. Lo Cicero  
 Thomas and Joan Loban  
 Local Economies Project of the New World Foundation  
 Loewi-Lemberger Kaplan Charitable Fund  
 Dale and Robin Lois  
 Stella M. London  
 Joan and James Lonergan  
 Love Holds Life  
 Love's Flowers  
 John J. and Janice Lucena  
 Frank E. Lucente, M.D.  
 Peter and Elizabeth Lumb  
 Stephen P. Lumb  
 Mary and William Lunt

Andrea R. Lurie, Esq.  
 Luse Renovations  
 Mark H. and Gretchen B. Lytle  
 M & M Automotive of Rhinebeck Ltd.  
 M&T Bank  
 M&T Charitable Foundation  
 John C. and Cecelia A. Macauley  
 Dan P. Maciejak  
 The Earle I. Mack Foundation  
 Mackey, Butts & Wise LLP  
 Francis D. and Kathleen E. Mahodil  
 John E. and Elizabeth J. Mahon  
 Mahopac Central School District  
 Tompkins Mahopac Bank  
 Mahopac Volunteer Fire Department  
 Aleena Malik  
 Cora M. Mallory-Davis and William C. Davis  
 Arthur M. and Nancy H. Mamazza  
 Louise F. Mandy  
 James and Libby Manion  
 Manneses Restaurant  
 Marist College  
 Barbara B. Markell  
 Peter B. Markey and Maria L. DiFolco  
 June F. Markle  
 Stephen and Rosemarie Marks  
 Marlboro Chapter of UNICO  
 The Marlborough Town PBA  
 Alfred Jr. and Monika Marotta

Jennifer Marrinan and Chris Schmalz  
 Marshall & Sterling Inc.  
 Natalie Marshall  
 Phyllis J. Marsteller  
 Beth N. Martin  
 Jacques Martin and Helene Cote  
 Roy M. Martin and Joy J. Lindsay  
 Michael Marvin  
 Mary Jane's Dairy Bar Inc.  
 Claudio Marzollo  
 Richard B. and Judith Mathews  
 Lila Matlin  
 Melissa Matos and Alfonso Delgado Matos  
 Matthew C. Hall & Co. LLP  
 Richard and Mona Matthies  
 Laurence C. Maxwell  
 Irma Yvonne Mayer  
 McCabe & Mack LLP  
 James J. McCann Charitable Trust and McCann  
 Foundation Inc.  
 Kerry McCarthy  
 Valerie McCarthy  
 Sara W. McGinty, Esq.  
 J. Joseph and Mary McGowan  
 David M. and Beverly L. McHugh  
 Jamie McHugh  
 Ronald McKechnie  
 George Z. and Leslie McKenzie  
 Anna J. McLellan  
 Thomas J. and Penny McLoughlin  
 Carol C. McNerney  
 Cristin McPeake  
 Rita McPeck  
 Gerald F. and Rose Meade  
 Meals On Wheels of Greater Hyde Park Inc.  
 Roy and Hilda Merolli  
 Messco Building Supply  
 Metal Partners International  
 Burt and Bobbie Metz  
 Meyer Contracting Corporation  
 Robert and Carol Michie

Anthony M. Mignone and Matthew P. Coumbes  
 Mark and Jessie Milano Foundation  
 Miles of Hope Breast Cancer Foundation  
 Lisa Mileti  
 Geoffrey and Harriet Miller  
 William G. Miller & Son Funeral Home Inc.  
 Malcolm J. and Joy E. Mills  
 Minisink Hook & Ladder Company Inc.  
 Deborah Mintz  
 Richard A. and Susan H. Mitchell  
 Anne Moehle-Ferrara  
 Mombasha Fire Company Inc.  
 Sandra W. MoneyMaker and Beatrice J. Gioeni  
 Gloria C. Montgomery  
 Robin and Patricia Moore  
 Timothy Moore  
 Morehead Auto Sales Inc.  
 Honorable Cecelia G. Morris  
 Robert L. and Anita W. Morrison  
 Kathleen A. Moslander  
 Arnold L. and Deborah T. Most  
 Mount Saint Mary College  
 Mountainville Engine Company #3 Inc.  
 John F. Murphy Realty Group Inc.  
 Murphy Wealth Management Group  
 Robert W. Murphy  
 Michelle H. Mushlit  
 Deborah Mutschler  
 Christopher and Kathleen Myers  
 N&S Supply  
 Victoria J. Nameth  
 National Christian Foundation of West Michigan  
 Julio and Isabel Nazario  
 James E. and Margaret Nelson  
 Leonard H. and Marlene K. Nelson  
 Michael Nelson  
 Douglas G. and Lyn Nestler  
 Network for Good  
 New York Communications Co. Inc.  
 New York Community Trust  
 New York Council of Nonprofits Inc.

Newburgh Lodge 247 BPO of Elks  
 Newcombe Foundation  
 George Nicholson  
 Paul E. Niedercorn  
 Northern Medical Group PLLC  
 John P. Noto Trucking Inc.  
 NoVo Foundation  
 Mindy Nowik  
 Carole E. Nugent  
 Wayne L. and Brigid M. Nussbickel  
 NYSCOPBA - Woodbourne  
 O Positive Festivals Inc.  
 Raymon P. Oberly  
 Christopher O'Brien  
 Michael and Felicity Iris O'Brien  
 Antonia Odell  
 Beatrice Ogunti  
 Benjamin Ohebshalom  
 Old Dutch Church  
 Mary D. Olivere  
 Omega Institute for Holistic Studies Inc.  
 On My Way Childcare Center LLC  
 Kip Bleakley O'Neill  
 Orange County Deputy Sheriff's PBA  
 Suzanne Orchowksi  
 Raymond and Susan Orloff  
 Rachel Ornstein  
 Anne and Frederick Osborn, III  
 John P. O'Shea  
 Patricia A. O'Shea  
 Richard G. Ostner  
 O'Toole's Pub  
 Steven and Janemarie Owen  
 Marie E. Pace  
 Package Pavement Co. Inc.  
 Allan and Rachel Page  
 Paul and Kristin Page  
 William H. and Helen Page  
 Mark and Christine Paolillo  
 Victor A. Paonessa Jr.  
 William P. Pape  
 Dan Parascandola  
 Ed and Arlene Pasquarelli  
 James F. Passikoff  
 Sara J. Pasti  
 Per Paulsson and Donna Segal  
 Scott and Diane Pawenski  
 PBA Association of New Windsor NY Inc.  
 The PCW Management Center LLC  
 Sarah Peacock  
 Anita W. Peck  
 Christian H. Pedersen and Kerry Kirk  
 Linda L. Pedersen  
 People's Place  
 Petalos Floral Design  
 E. Elizabeth Peters  
 David and Randi Petrovits  
 Darlene L. Pfeiffer  
 Joseph L. Jr. and Patricia Phelan  
 Brooke Pickering-Cole  
 Paul and Catherine Pietrow  
 John and Ann Pinna  
 PKF O'Connor Davies LLP  
 Planned Parenthood of the Mid-Hudson Valley Inc.  
 Mark L. Plaumann

Pleasant Valley Volunteer Fire Co. #1 Inc.  
 Polansky, Kulberg & Co. LLP  
 Police Emerald Society of the Hudson Valley, NY Inc.  
 Robert and Linda Pollack  
 Merle A. Pollak  
 Polyshell Communications Corp.  
 Porco Energy Corp.  
 Porpiglia Electrical Contractors Inc.  
 Honorable Joan S. Posner and David L. Posner, Esq.  
 Barbara J. Post  
 Holly Post and Ron Kraus  
 Poughkeepsie Day School  
 Ardal Powell MA, PhD  
 Annette Power Johnson  
 Precision Pipeline Solutions  
 Premier Cares Foundation  
 Premier Medical Group of the Hudson Valley PC  
 Nathaniel S. and Anita Prentice  
 Theodore O. Prenting  
 Stephen J. Price and Marie L. Gibson-Price  
 Pro Safety Services LLC  
 Amara Projansky  
 Bill Pugh  
 Charles A. Pulling  
 Putnam County Sheriff's Department PBA Inc.  
 Putnam County Volunteer Firemen's Association  
 Kevin J. Quilty  
 R & N Examiners Inc.  
 Sara T. Rabbino  
 Julia C. Radford  
 Ita M. Rahilly and Louis W. Fish  
 Harold Ramsey and Denise A. Johnson  
 Lawrence E. and Marla Randall  
 Yvonne K. Randlev  
 Robert J. Jr. and Maureen Ranieri  
 Rudolph S. and Sheila Rauch  
 Joseph E. Rauen and Garrison Botts  
 Michael Reardon and Melissa Macaluso  
 Red Hook Fire Co. Inc.  
 Herb Redl Inc.  
 Judith M. Reichler, Esq.  
 Margery, Nancy, and Steven Reifler  
 Eleanore Reilly  
 James and Patricia Reilly  
 William and Barbara Reilly  
 Janet I. Reinertsen  
 Wilfred and Helen Relyea  
 Susannah C. Renzi  
 Resource Center for Accessible Living Inc.  
 Andrea L. Reynolds  
 Theresa T. Reynolds  
 Old Rhinebeck Aerodrome/Rhinebeck  
 Aerodrome Museum  
 Rhinebeck Bank  
 Rhinebeck Department Store Inc.  
 The Rhinebeck Garage Inc.  
 Rhinebeck Grange P of H 896  
 Rhinebeck Kitchen and Bath  
 Joseph and Denise Rhoades  
 Mark and Kelly Riccardi  
 Justin Riccobono  
 David D. Richard  
 Jeffrey D. Richter  
 Robert C. and Marilyn J. Richter  
 Rick's Automotive



Gerald Berflner

Wayne and Nancy Rifenburg  
 David J. Ringwood  
 William Ritcheske Charitable Lead Trust  
 Mary F. Ritz  
 Tiela Rivera  
 Richard W. Rizzo and Enid Ain  
 Barbara L. Robertiello  
 Roberts Contracting Inc.  
 Edmond and Patricia Roberts  
 J. Peter and Linda Roberts  
 Shirley H. Robinson  
 Emily C. and Karl J. Robisch  
 Rocking Horse Ranch  
 Jeffrey Rockwell  
 Karl and Ann Rodman  
 Jacqueline Rodrigues and Antonio A. Rodrigues Jr.  
 Prashant and Niloufer Rodrigues  
 Deborah L. Rodriguez  
 Olga Rodriguez  
 John and Tracy Roger  
 Gilbert M. Roman  
 Justin S. Romer  
 Rondout Savings Bank  
 Roosevelt Engine Company 1  
 Roosevelt Fire Department  
 Roosevelt Volunteer Fire Company Engine #3  
 Charles A. Ropes III  
 Briana L. Rose  
 Lucas and Jennifer Rosen  
 Jeremiah L. Rosen  
 Nathana M. Rosen  
 Edward and Marilyn Rosenberg  
 Jeff and Pat Rosenberg  
 The Honorable Albert M. and Julia Rosenblatt  
 Seth and Shoshana Rosenfield  
 John and Libby Ross  
 Stella G. Rossi  
 Poughkeepsie Arlington Rotary Club  
 Rotary Club of Wappingers Falls Inc.  
 Royal Carting Service Company

Royal Wine Corp.  
 The RTA Store  
 Neil and Abigail Rubinstein  
 Nancy Q. Rubsam  
 Margaret M. Rudel  
 Dana Rudikoff  
 Ruge's Automotive Inc.  
 RUPCO  
 Rusk, Wadlin, Heppner & Martuscello LLP  
 Susan Russell Robinson and Gilpin R. Robsinson  
 Mark and Jill Russell  
 Russo Fuel Inc.  
 Konstantin M. and Elizabeth M. Rutledge  
 Ryan & Ryan Insurance Brokers Inc.  
 Greer Rychcik  
 Michelle Saas  
 R.E. Sachs  
 Salisbury Bank and Trust Co.  
 Lorraine Salmon  
 Salt Point Volunteer Fire Co. Inc.  
 L. Tremper Saltsman  
 Myrna Sameth  
 Frank Sanchis and Harvey Susnick  
 Rita Sands and Jay Sadowitz  
 Steven Sansola  
 Samuel R. Sansone  
 Sandy Santra  
 Saratoga Springs City School District  
 Marjorie S. Satter  
 Daniel and Jody Scagnelli  
 Kenneth and Mary Beth Scattergood  
 Shannon M. Scaturro  
 Lois J. Sceppaquercia-Kerr and David Kerr  
 Warren and Joan Scherer  
 Frank J. Schiavone Jr. and Laurie Brent Schiavone  
 Lynne M. Schiffer  
 J. David and Joann Schmidt  
 Gail Schneider  
 Rev. William and Carol Schnitzer  
 Pat Schories and Harry Bolick



A lively performance at Shadowland Stages.

Erin Schulman  
 Kathy L. Schulz  
 David M. Schwartz  
 Carolyn A. Scott  
 Donna Seaman  
 Barbara A. Searle  
 Second Chance Foods  
 Pat Sexton and Peter Muste  
 Richard J. and Laura A. Sgroi  
 Brian and Caren Shaltakoff  
 Mary L. Shanley  
 Shantigar Foundation  
 Shawangunk Valley Conservancy  
 Estate of Barbara M. Shea  
 James D. Sheridan  
 Sherman Furniture Rentals  
 Joan Sherman  
 Daniel and Jeanne Short  
 Margery M. Short  
 Larry and Nancy Shosid  
 Beheroze Shroff  
 John V. and Margaret Shuhala  
 Anne R. Shultz  
 Paul and Ellen Siebold  
 Christopher G. Silva and Casey Kurti  
 Matthew and Debra Silverman  
 Paul and Elizabeth Silverstein  
 Bonnie Jo Simon  
 Chip Simon and Karen Hansen Simon  
 Gary D. Sims and Beverly J. Gunderman  
 Sinon Farms Inc.  
 Daniel Sistarenik  
 Sky Diamond Jewelers  
 Slater Chemical Fire Co.  
 Paul and Nancy Slayton  
 Catherine J. Smith  
 Elizabeth Smith  
 Jane Barber Smith  
 Joan Smith  
 Kari Smith  
 Marjorie Smith  
 Michelle D. Smith  
 Perry Smith  
 Raymond D. Smith Jr. and Anne Allbright Smith  
 Richard D. Smith  
 David and Susan Smith  
 Tristen C. Smith  
 Nevill and Karen Smythe  
 Linda Snelham-Moore

Michael and Annamitra Snow  
 Zachary Snow and Judy Fox  
 Dolores P. Snowden  
 SoHo Reprographics Inc.  
 Darrol and Deirdre Solin  
 Adam and Renate Soyer  
 William L. Spearman  
 Loretta Spence  
 Anthony and Angela Speziale  
 Robin S. Spiegel  
 Elaine Sproat  
 H. Knickerbocker Staley Jr.  
 Ruth Stanton  
 Karen J. Steele  
 Richard B. Steele Jr.  
 Arth and Rea Stein  
 The Honorable William R. and Susan Steinhaus  
 Kristen and Michael Stephan  
 Travis Sterritt  
 William and Beulah Stevens  
 Matt Stinchcomb and Benedikta Karasal von Karais  
 Bryon S. Stinson  
 Paul and Judith Stoddard  
 Tom Stoenner  
 Julia S. Stokes  
 Stone Ridge Wine & Spirits  
 Storm King Engine Co. 2  
 Roger and Rose Story  
 Maureen and Stanley Straub  
 Stefan Strothmann  
 Abigail Sturges  
 Tom and Bettie Sturm  
 SUNY New Paltz Foundation Inc.  
 Stephanie Suozzo  
 Sure Built Concrete  
 David F. Surico  
 Edward and Barbara Surowitz  
 Helen Suter  
 Glenn B. Sutherland and Cynthia A. Lowe  
 Brent M. Sverdlhoff and Craig G. St. Clair  
 Alberta Sweeney and Elizabeth Sweeney  
 Sweet's Funeral Home Inc.  
 Bill and Vivian Swetow  
 Frederick W. and Earlah Swift  
 Richard and Maryann Syrek  
 Taconic Advisors Inc.  
 Don and Judy Tallerman  
 Joseph J. and Pamela Tarquinio  
 Ronald and Shelley Tatelbaum  
 Bruce and Beverly Taylor  
 Christopher Taylor and Jennie Park-Taylor  
 James L. Taylor Manufacturing Co. Inc.  
 TD Ameritrade Clearing  
 TD Bank  
 Teahan & Constantino LLP  
 Vincent L. Teahan, Esq. and Johanna Triegel, MD  
 Teamsters Local Union No. 282  
 TEG Federal Credit Union  
 Lucas and Maureen Terranova  
 Robert W. Terry  
 Therapy in Motion Inc.  
 Henrietta Thetford  
 William F. and Ali Thetford  
 Thomas Thompson Trust  
 The Thompson Family Foundation

Lisa M. Thompson  
 Marcia Pena Thompson  
 Angela Thompson-Tinsley, Esq.  
 Thrivent Financial for Lutherans  
 Herman and Sharon Tietjen  
 John W. Tietjen  
 Kim C. Tietjen  
 Tinkelman Architecture PLLC  
 Robert M. and Joann Tipton  
 Richard C. and Katherine O. Tobey  
 David and Martha Tobias  
 Joseph B. Tockarszewsky  
 Tonage Inc.  
 Michael and Kelly Torcello  
 Patricia A. Tosi  
 Town of Lloyd Police Benevolent Association Inc.  
 Town of Newburgh Emergency Services  
 Transpersonal Acupuncture  
 Lou Trapani, MPA  
 Ephie Trataros, Esq.  
 John and Allyson Traver  
 Alix Travis  
 E. Keith and Sandra J. Troccia  
 Joyce M. Tuller  
 Michelle Turck  
 Gloria Turk  
 Adrienne H. Turner  
 Turpin Foundation Inc.  
 Louis and Julie Turpin  
 U.S. Concrete Inc.  
 U.S. LBM Holdings LLC  
 Abraham and Eileen Uchitelle  
 Peter O. and Rose A. Ulanmo  
 Ulster County Community College  
 Ulster County Habitat for Humanity  
 Ulster Federal Credit Union  
 Ulster Firearms Inc.  
 Ulster Savings Bank  
 Unison Arts Center & Sculpture Garden  
 United Way of the Dutchess-Orange Region  
 Arthur and Linda Upright  
 Petrina Urso Piccolo  
 USI Insurance Services LLC  
 Richard and Genevieve Vaccariello  
 Andre Valdez and Nancy Weinstein-Valdez  
 Valer Enterprises Inc.  
 Dean Vallas and Debra R. Pemstein  
 Valley Towing & Transporting Inc.  
 Valuoffice Products Co.  
 Ariane van Buren  
 Sangi van den Nouweland  
 Van DeWater & Van DeWater LLP  
 Philip and Barbara Van Itallie  
 Peter and Myna Van Kleeck  
 Illiana van Meeteren  
 Gary T. and Patricia H. Van Natten  
 Mary Louise Van Winkle  
 Marc A. and Dana L. vanderHeyden  
 Vassar College  
 Louis Venech  
 Vergona Crane Co. Inc.  
 Vibe Dance Studio LLC  
 Viking Industries Inc.  
 Villa Borghese  
 Villa Roma Pizzeria Inc.



*A performance of As You Like It at the Hudson Valley Shakespeare Festival.*

Mark and Elizabeth Villanti  
 Stephen J. and Stephanie M. Vitolano  
 Ellen A. Vitolo  
 John Vitro  
 Robert Vogelbacher  
 Mike Vuoso  
 Christopher A. and Victoria H. Waddail  
 Wagner Technical Services Inc.  
 Elizabeth Waldstein-Hart  
 Charles H. Walker  
 Marilyn K. Walker  
 Thomas F. and Pegeen Wall  
 Wallace and Wallace LLP  
 Wallkill PBA  
 Wallkill Valley Federal Savings and Loan Association  
 Wallkill View Farm, LLC  
 Wappingers Central School District  
 Wappingers Congress of Teachers  
 Wappingers Jr. High School Extraclassroom Funds  
 Adele Warshawsky  
 Alan and Debra Wasser  
 Steven and Stephanie Wasser  
 Robert H. Weatherill  
 Weed Farms Inc.  
 Everett K. Weedin Jr.  
 Robin Weinberg  
 Martin and Karen Weinstein  
 Mitchell and Robin Weinstein  
 Todd and Robyn Weinstein

Andrew and Linda Weintraub  
 Ann Weiser and Neil Krupnick  
 Mellina Weiss  
 Christine C. Welker  
 Wells Fargo Advisors LLC  
 Wells Fargo Advisors LLC - Poughkeepsie  
 Ann K. Wentworth  
 West Hurley Fire Dept.  
 Marah Westby  
 Marea J. Wexler  
 George C. Whipple III  
 Jessica L. White  
 Kevin White and Kim Turner  
 Lyle Wienick and Randi Wienick  
 Frederick and Sharon Wilhelm  
 Williams Lumber & Home Centers  
 LaGreta Williams  
 Mark and Mary Ann Williams  
 Michael Williams  
 Ross J. Williams  
 Laurence Willig  
 Lisa Wilson  
 James A. and Mary Wing  
 Robert C. and Mary E. Winkler  
 Judith T. Wolcott  
 Detlef and Carole Wolf  
 Elizabeth Mylod Wolf  
 Jeffrey D. Wood  
 Stephen J. Wood and Kate L. Boyer

Woodland Pond at New Paltz  
 Marcia Woodruff  
 Ronald Wozniak and Victoria Reinhold  
 Yanarella School of Dance  
 Nicole C. Yaw  
 John M. Zerbo Jr.  
 Robin Zitter

We also wish to express our gratitude to the following funds that made grant distributions to the Foundations between July 1, 2018 – June 30, 2019.

Patrick and Barbara Adams Fund  
 Fanny V.W. Boos Trust Fund  
 Carroll and Wieck Charitable Fund  
 Cross Hahn Family Fund  
 Dates Fund  
 Dana and Ira Effron Fund  
 Foundation for Community Health Fund  
 Bernard and Shirley Handel Foundation DAF  
 Rainy Day Fund  
 Lola J. Sherman Trust of New York Community Trust  
 Virginia L. Starke Donor Advised Fund  
 Tomlinson Estate-Beacon Fund  
 Charles J. and Frances M. Turck Memorial Fund  
 Peter and Ermina Van Kleeck Family Fund



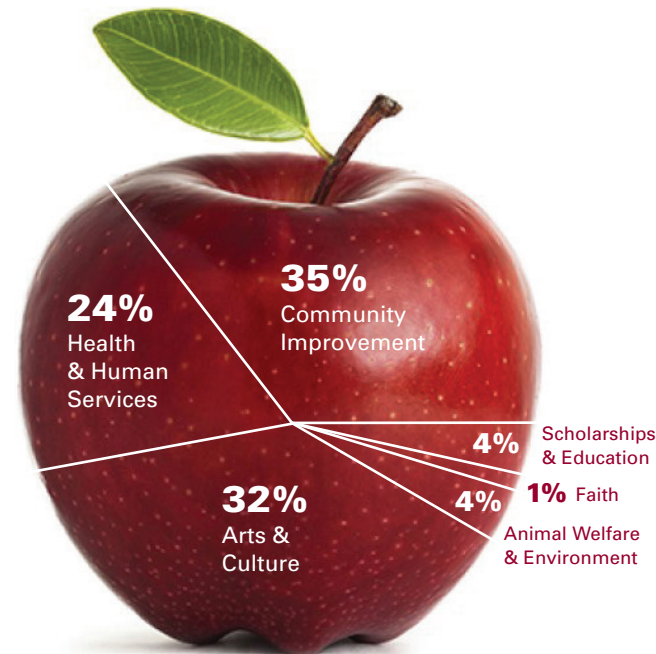
# Community Foundations of the Hudson Valley

## Consolidated Financial Statement

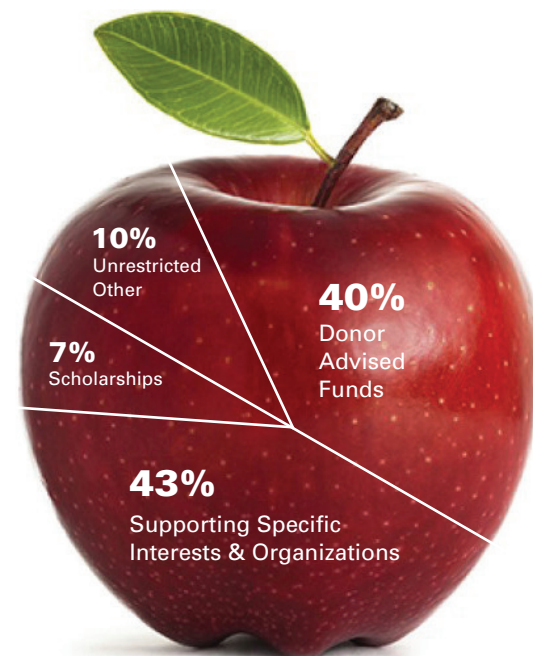
Fiscal year ended June 30, 2019 (Unaudited)

Assets	Total
Cash and Cash Equivalents	8,109,412
Investments	73,973,034
Accounts and Interest Receivable	105,901
Pledges Receivable	750,000
Prepaid Expenses	97,999
Charitable Remainder Unitrust	332,874
Life Insurance Policies	297,718
Property and Equipment, net	10,963
<b>Total Assets</b>	<b>83,677,901</b>
Liabilities	Total
Agency Funds	9,438,148
Grants Payable	11,333,105
Accounts Payable and Other Liabilities	57,042
Deferred Revenue	58,218
<b>Total Liabilities</b>	<b>20,886,513</b>
Net Assets	Total
Without Donor Restrictions	61,410,796
With Donor Restrictions	1,380,592
<b>Total Net Assets</b>	<b>59,873,951</b>
<b>Total Liabilities and Net Assets</b>	<b>83,677,901</b>

## Grants by Program Area



## Assets by Fund Type



## Creating a Lasting Impact

The Legacy Society recognizes those who have set aside gifts to benefit the community through their will, trust or estate plans. We are grateful to the following individuals whose commitment and vision for a better tomorrow will endure.



**“I am a huge fan of CFHV – such a great investment in our community! Including CFHV in my will was the easiest decision to make. I trust them to know what our communities need and the organizations best suited to provide the services.”**

Benjamin Krevolin,  
Legacy Society Member

Anonymous (27 donors)  
Richard C. Albert  
Dr. Richard V. Barry  
Ms. Catherine Baer and  
Ms. Heather Whitefield  
Ms. Enid Breisblatt and Mr. Jeffrey Telschow  
Mrs. Susan Roeller Brown and  
Dr. Langdon Brown  
Dr. Roy T. Budnik

Mr. Martin and Mrs. Eleanor Charwat  
Robert J. Cotter  
Mr. Russell J. Croce  
Ms. Sally J. Cross  
Mr. Brian Drabkin  
Ms. Imogene Drummond  
Mr. and Mrs. Stephen DuBois  
Michael Dupree and Michael Fleischer  
Mr. Vern Fish  
March S. Gallagher, Esq.  
Mr. John M. Garesché  
Mr. Arthur L. Gellert  
Mrs. Bette Greenwald  
Mr. and Mrs. Conrad Heisman  
Ms. Anne E. Impellizzeri  
Joan and Lawrence Korducki  
Dr. Thomas and Mrs. Jamie Koshy  
Mr. Benjamin Krevolin  
Ms. Barbara W. LaPietra  
Dr. Daniel Lack  
A. Floyd Lattin  
Ms. Cynthia A. Lowe and  
Mr. Glenn B. Sutherland  
Elizabeth S. and James J. Manion  
Ms. Natalie Marshall  
Mr. Dennis and Mrs. Karen Meyer  
Ward L. E. Mintz

Mr. and Mrs. Robert Morina  
Mr. John O’Shea  
Anne and Frederick Osborn, III  
Mr. Francis Palmieri  
Ms. Darlene L. Pfeiffer  
The Prenting Family  
Kevin J. Quilty  
Ms. Andrea L. Reynolds  
Mr. David J. Ringwood  
Ms. Myrna Sameth  
Ms. Pat Schories  
Mr. and Mrs. Harold Seaman  
Ms. Susan L. Siegel and  
Mr. David H. Gordon  
Mr. Chip and Ms. Karen Simon  
Raymond D. Smith Jr. and  
Anne Allbright Smith  
Nevill and Karen Smythe  
Mr. and Mrs. Joseph Sullivan  
Rachel and Steven Tinkelman  
Mr. and Mrs. Steven Turk  
Dr. Mary Louise Van Winkle  
Charles ‘Bud’ Walker  
Mr. Jeffrey D. Wood  
Mr. Stephen J. Wood  
Ms. Patricia A. Wright  
Ms. Rebecca Zilinski

**“I’m a legacy society member so that I can give back to the community organizations that have meant so much to my life in the Hudson Valley.”**

Dr. Mary Louise Van Winkle,  
Legacy Society Member



A copy of our Form 990 is available by visiting [CommunityFoundationsHV.org/Financials](http://CommunityFoundationsHV.org/Financials)



**COMMUNITY  
FOUNDATIONS**  
OF THE HUDSON VALLEY



*Responding Today  
Investing in Tomorrow*

80 Washington Street, Suite 201  
Poughkeepsie, NY 12601

Please remember us in your trust, will and estate plan.

## How Do Community Foundations Work?

### 1 IT STARTS WITH PEOPLE

- Individuals
- Corporations
- Private Foundations
- Nonprofit Organizations



### 2 WITH A PASSION

- Animal Welfare
- Arts & Culture
- Education
- Environment
- Faith
- Farm Fresh Food
- Health & Medical Services



### 3 WHO GENEROUSLY GIVE

- Cash
- Securities
- Real Assets
- Retirement Funds
- Insurance
- Bequests
- Charitable Trusts



Hudson Valley Seed

### 4 TO CREATE FUNDS

Tailored to achieve their financial and charitable goals



### 5 THAT ARE DISTRIBUTED TO MAKE AN IMPACT

- Grants
- Scholarships



Family Services TRAC Program



Mohonk Preserve